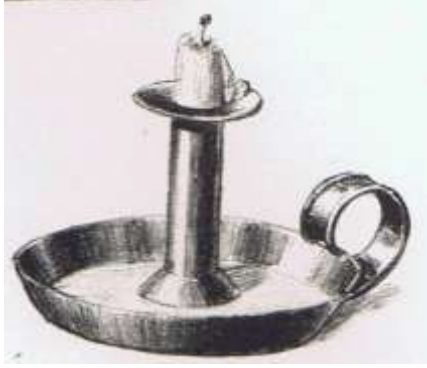


Authentic, Original Period Lighting Fixtures

All Originals, No Reproductions



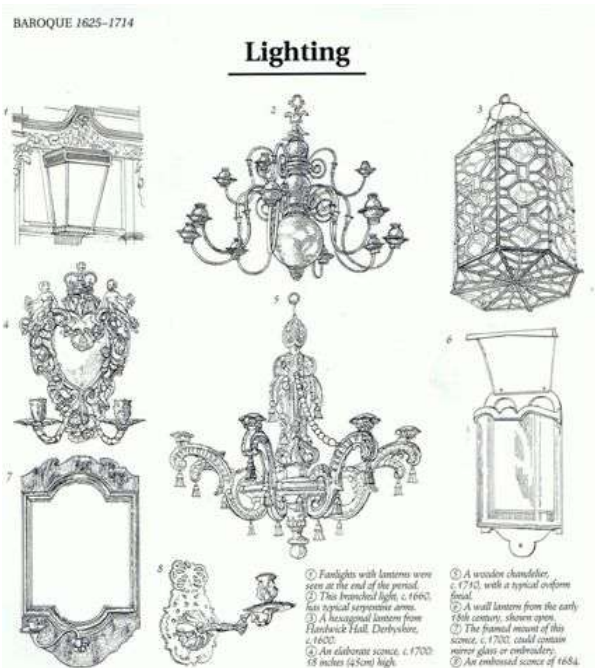
Only fine original Lighting Antiques, Reconditioned and Ready to go!

Tell us about your wish list
We'll source it from the Antique Lighting Purveyors all over the continent.
Can't wait to hear all about your project!

Below are illustrations of Period Lighting Fixtures and their dates. Notice how the Periods (as stated) overlap. Regionalisms make a big impact on style as well.



The illustrations below come from *Elements of Style* by Stephen Calloway. The book shows Doors, Windows, Ceilings, Walls, Floors, Fireplaces, Staircases, Built In Furniture, Lighting, Metal Work and Woodwork, all within their periods. It's a must have book if you're trying to get your periods somewhat straight. Check for the "Book" icon at the bottom of the Catalog page and order it directly



Baroque

1625-1714



Cast Iron Exterior Fluted Columns from a Courthouse 1910-1919

Fully Restored 78" H X 21" W X 21" D



Pair Cast Iron Post Lamps-Galvanized 1900-1910

48" H X 12" W X 12" D X 12" Diameter (Original Globes Damaged-New Ones Avail)

Lighting

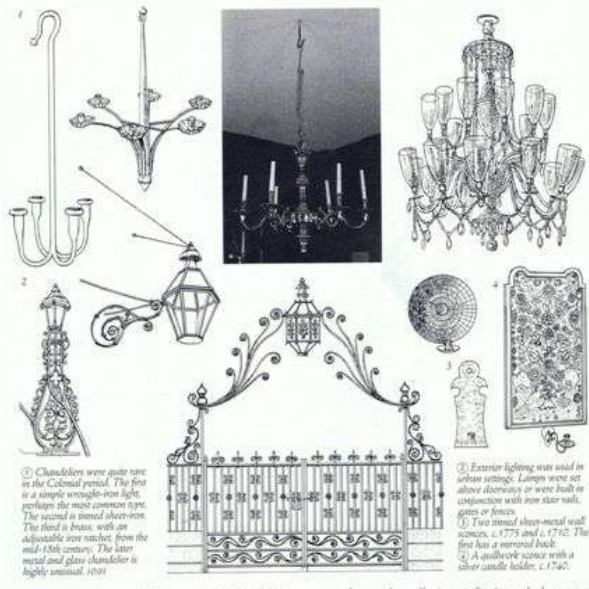


Early Georgian 1714-1765



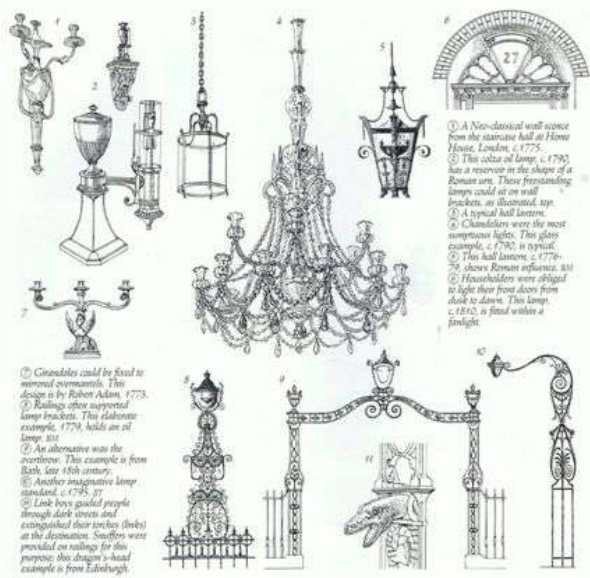
Old Prison Spotlight, patent date March 23, 1909 Maker Crousehinds lens is in perfect shape, with no cracks In working Condition but rewiring would be in order

Lighting



Colonial 1607-1780

Lighting

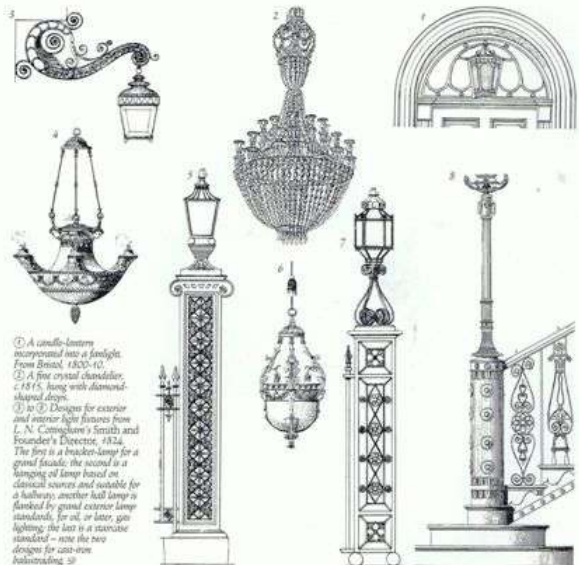


Late Georgian 1765-1811



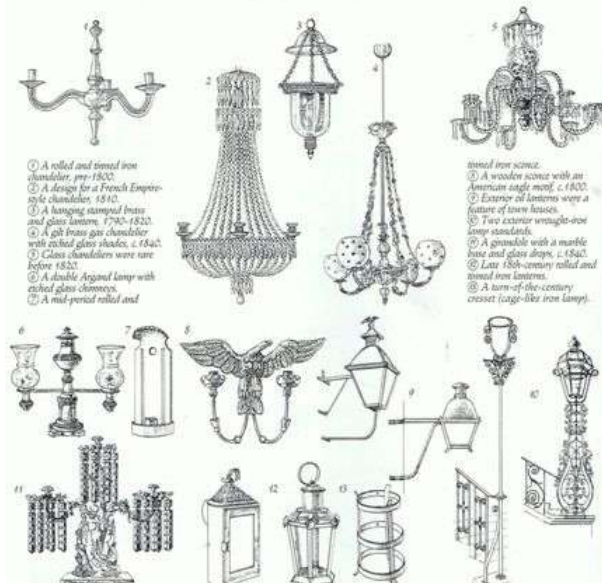
Navy Spotlight all brass fixture, came off of Lionel Liberty ship

Lighting



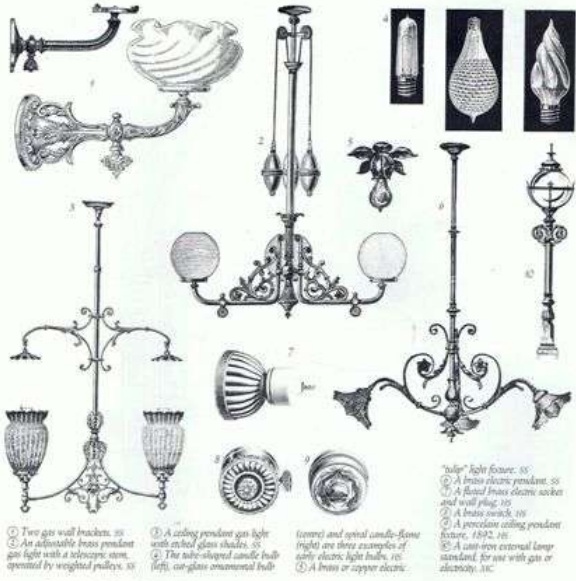
Regency & Early 19th Century 1811-1837

Lighting



Federal & Empire 1780-1850

Lighting



- ① Two gas wall brackets, 1855
- ② An adjustable brass pendant gas light with a telescopic stem, operated by weighted pulleys, 1857
- ③ A ceiling pendant gas light with etched glass shades, 1857
- ④ The tubular candle bulb (left), cut-glass ornamental bulb (center) and spiral candle-flame (right) are three examples of early electric light bulbs, 1870
- ⑤ A brass or copper electric "tulip" light fixture, 1875
- ⑥ A brass electric pendant, 1875
- ⑦ A brass electric socket and wall plug, 1875
- ⑧ A brass candle, 1875
- ⑨ A precision ceiling pendant fixture, 1892, 1893
- ⑩ A cast-iron exterior lamp standard, for use with gas or electricity, 1870

British Victorian 1837-1901

Lighting



- ① An oil-burning light fixture of the 1840s
- ② A ball lantern, c. 1850, in the Arts and Crafts style. The smoke bell at the top indicates that lamp-burned kerosene (paraffin)
- ③ The dangling crystal fringe is a luxury touch on this turn-of-the-century kerosene lamp
- ④ A gas-burning fixture with multiple globes, 1850s. It could be lowered from the ceiling for cleaning and maintenance
- ⑤ A kerosene or coal-oil lamp
- ⑥ A brass gas bracket, 1900s
- ⑦ A Rococo gas bracket, Starr, Fellows and Company, New York, 1856
- ⑧ An iron kerosene-burning chandelier, c. 1890. It could be lowered from the ceiling for filling and maintenance
- ⑨ A gas chandelier, 1880s
- ⑩ A wall bracket holding a kerosene lamp, 1840s
- ⑪ A Rococo Revival gas bracket, cast metal, 1850s
- ⑫ A kerosene wall bracket mounted on a hinged arm. The shade is etched glass
- ⑬ Oil and gas light fixtures were first attached to stanchion screw posts in the 1850s. These two Renaissance-style examples date from the 1860s
- ⑭ An industrial design for a novel post lamp, from Woodard's National Architect, 1864

American Victorian 1840-1910

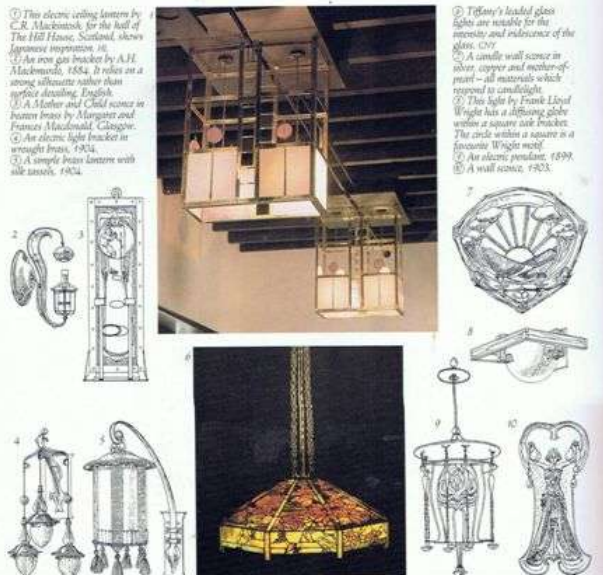
Lighting



- ① The lighting at the Cambie House, Pasadena, California, incorporates Tiffany glass, c. 1910
- ② and ③ Both the candle sconce (1924) and the "Old English" electric bracket (1901) are finished in oxidized metal
- ④ A mass-produced exterior lamp, English
- ⑤ A novel iron electric standard from Sarsmore Hall, Middlesex, late 1850s
- ⑥ A fine candle sconce by Ernest Gimson
- ⑦ An ornate gas pendant which came in brass, steel or a "red-bronze" finish, 1920
- ⑧ A magnificent light in hammered copper with enamel embellishments, 1924
- ⑨ A plate hand-wrought iron corona for candles, 1925
- ⑩ A copper and brass pendant by Boscawen. The lampshades are hand-blown glass, c.

Arts & Crafts 1860-1925

Lighting



- ① This electric ceiling lantern by C.R. Mackintosh, for the hall of The Hill House, Scotland, shows Japanese inspiration, 1901
- ② An iron gas bracket by A.H. Mackintosh, 1884. It relies on a strong silhouette rather than specific detailing, English
- ③ A Mother and Child sconce in beaten brass by Margaret and Frances Macdonald, Glasgow
- ④ An electric light bracket in wrought brass, 1904
- ⑤ A simple brass lantern with silk shades, 1904
- ⑥ Tiffany's leaded glass light is notable for the economy and relevance of the glass, c. 1910
- ⑦ A candle wall sconce in silver, copper and mother-of-pearl - all materials which respond to candlelight
- ⑧ This light by Frank Lloyd Wright has a diffusing globe within a square side bracket. The circle within a square is a favorite Wright motif
- ⑨ An electric pendant, 1899
- ⑩ A wall sconce, 1903

Art Nouveau 1888-1905

Lighting

① By 1911 the General Electric Company catalogue ran into three large volumes, one of which was almost entirely devoted to light fixtures. This G. E. C. ceiling light or "chandelier" - the "Cowbridge" - is in gilt-coloured polished brass. It would be suitable for a



large drawing room or a ballroom. The bowls may be cut glass or satin finish. GEC
 ② The invention of the internal gas burner made possible the downlighting gas pendant. This one is typical (Young and Menon, 1916), 110



③ A polished brass wall bracket with opal glass shades. Wall brackets were very popular in smaller rooms; all the fixed lights might be wall-mounted, with supplementary standard lamps for reading or sewing. GEC
 ④ A French-style ornate (gilt bronze) wall fixture with rotating ribworkwork. N. Burn

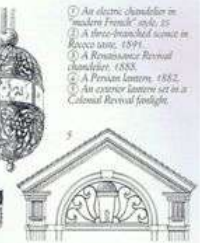
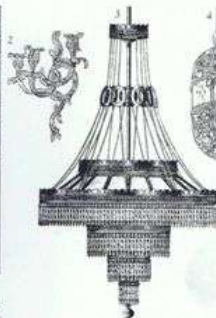
and Co. (Window Street, London). Such brackets were also available in Neo-classical styles, with urn finials. 110
 ⑤ Self-steered lamps, with counterbalanced weights so that they could be raised and lowered, were popular over dining room tables. This is the G. E. C. Penstone model. GEC
 ⑥ Mandy-styled pendant electric lights such as these would have been used primarily on landings and in corridors. GEC
 ⑦ Two characteristic wall switches. Covers could be floral brass or plain china. Such switches have become popular again today. GEC



Edwardian 1901-1914

AMERICAN BEAUX ARTS

Lighting



① An electric chandelier in "modern French" style. 115
 ② A three-branched sconce in Rococo style. 1891.
 ③ A Renaissance Revival chandelier. 1888.
 ④ A Prairie lantern. 1882.
 ⑤ An exterior lantern set in a Colonial Revival footlight.



⑥ A gas-burning machine on a spiral post. 1872.
 ⑦ A gas chandelier. c. 1880, conservative for its date.
 ⑧ A plain gas-burning sconce of brass and glass. 1880.
 ⑨ A wrought-iron lantern on ornamental brackets. c. 1900.
 ⑩ An elaborate open-worked wrought-iron lantern finial.
 ⑪ A wrought-iron gate ornament. Colonial style, with a more current hanging lantern.

American Beaux Arts 1870-1920

Indoor or Outdoor Industrial Lights



4 matching with 1 extra globe
 Most likely would have to be rewired.
 These are fairly large, as they came off the outside of an industrial building.



Now a Period Home can look and *feel* like a Period Home and *not* guzzle energy in order to do so. This evocative Ambient Lighting System is the epitome of the High Tech, High Touch philosophy that the New Old Home can bring into our lives.



Architectural Global Network

The National "Go To Source"

Jona Harvey

www.GoToAGN.com

610-565-4594 – Office, Yes, we're national!

610-247-1253 - Cell

888-807-1842 - Toll Free

FindIt@GoToAGN.com

AGN is going Global

