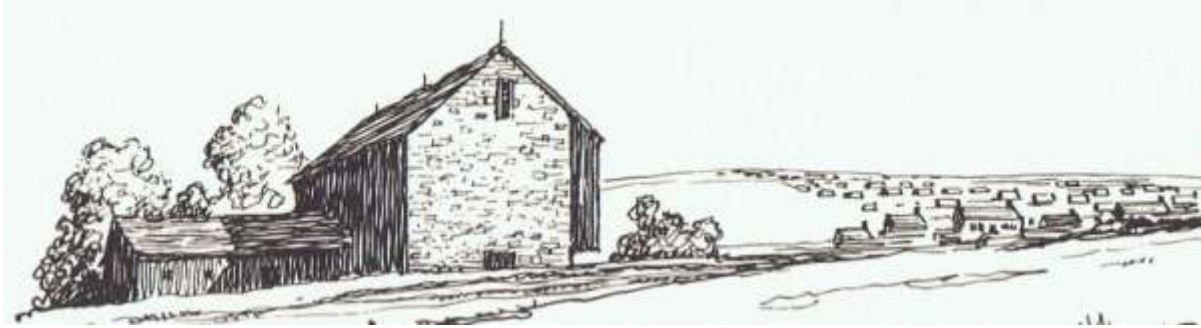


Antique Barns for Reconstruction, 20' Wide

All of the Individual Buildings you will see below are “Resurrection-Ready”!



Progress Encroaching on Magnificent Buildings: Welcome the story of Glorious Resurrection!

The buildings you see here are ready to be reconstructed wherever you say. They’re all yours! They are here because, yes, they have been threatened by the bulldozer. They have been either physically removed to *temporary safety* by an AGN Network Professional or are still standing under their watchful eye, “under contract in the field”, in hopes of adoption. They are all *temporarily* “saved”. None of them are *really* saved until they are adopted by a citizen-steward or a designer to be reconstructed into a new future, in a new location.

The Buildings you see here are “Resurrection Ready”. They get documented, numbered and tagged, meticulously and methodically deconstructed, whisked away to safety, repaired and placed in watchful storage by trained Network Professionals. Some have been freshly rescued. Some are still standing. Some have been lingering in storage for years. Storage tends to cost insistent dollars and is not to be viewed as a perpetual solution. The AGN Network Professionals are footing those bills for us right now.

But we have an idea.....(continued at the bottom of the page)

Let’s look at buildings now.



Smaller Carriage Houses

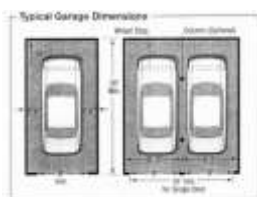
20’ Wide Barns

20 x 24	Carrriage House 1848
20 x 26	Quincy Road House
20 x 26	Small But tall
20 x 28	Small Berkshire Hills 1840
20 x 28	the Hewed Mix Softwood
20 x 28	Davis
20 x 30	Civil War Chestnut
20 x 30	the Manitowoc
20 x 30	the Carey
20 x 30	the Civil War Era
20 x 36	3 Bay
20 x 42	Ryan
20 X 55	White Carriage House
20 x 70	Red Carriage Shed

Here are some Sizes for references. Have fun looking at these Barns!

Floor Plans that represent sample minimum dimensions for you to play with as you look at Building Frames

Scroll down to the bottom of the page to see larger versions of these schematics for more visual detail.



Garage
20' x 24'

Workshop
12' x 24'

Two Stall Stable +
24' x 36'

Potting Shed
10' X 6'

Equipment Shed
8' x 10'

Timber Frame Carriage House 20 x 24 x 21



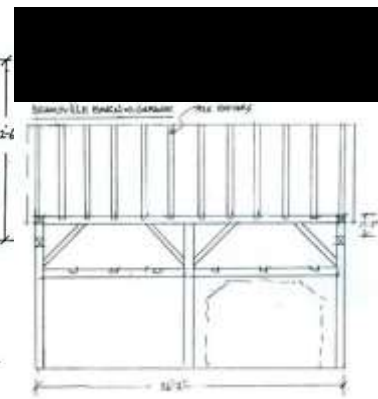
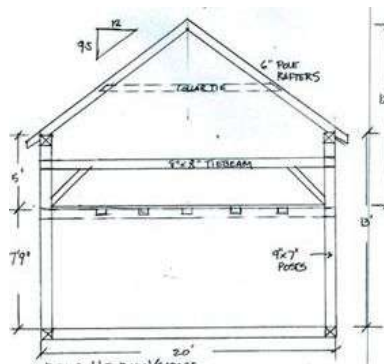
Timber Frame Carriage House 20 x 24 x 21

1849

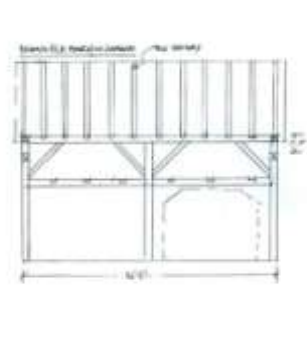
7 x 7 & 8 x 8 Hand Hewn Pine Timbers
Three bents, two bays with loft area

**Small but Tall Barn
Barn-Perfect for Garage Conversion with Loft-20' x 26'**

Great 2 car garage with generous loft area
7' 9" first floor and Generous Loft with 5' knee walls (The loft currently accommodates a 6-over-6 window)
(11' potential garage door openings for 2 cars)



20' x 26' Generous Loft - (11' potential door openings, 5' knee-walls)



Small Berkshire Hills 1840

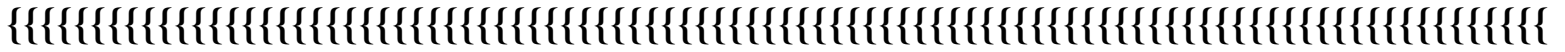
20' x 28'





Small Berkshire Hills 1840

20' x 28'



Hewed Mix Softwood



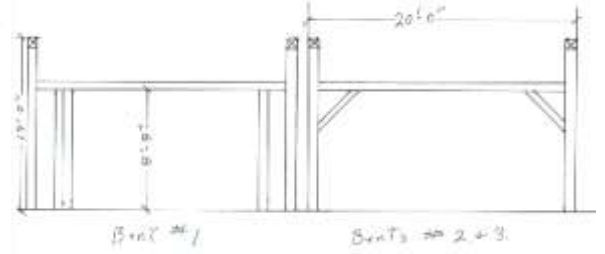
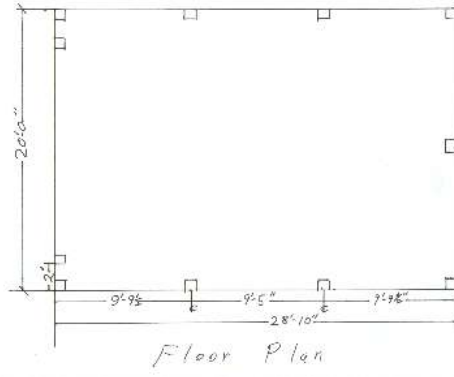
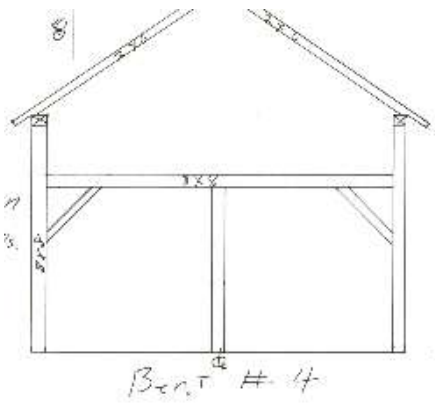
Hewed Mix Softwood

20x28 hewed frame mixed softwoods.
11' eve walls
8/12 pitch
Pentagonal ridge beam
Building is down

The Davis

20 x 28





The Davis

1840

20' x 28'

Posts: 8" x 8"

Rafters: 2" x 6"

Tie Beams: 4" x 4"

The Civil War Chestnut

20 x 30



The Civil War Chestnut

20 x 30

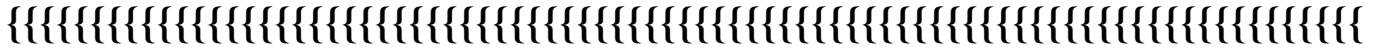
Civil War Era

Chestnut Timbers sawed in a water powered mill

1000 SF

Second Floor

Original siding to do at least 2 sides of the building
Second Floor Boards
Slate Roof Tiles: The Biggest Slates ever made: 16 wide x 24 Long
There is enough slate to do one side of the roof and ¼ side of the other half



The Manitowac 20 x 30



The Manitowac 20 x 30

Hand Hewn Pine, 8 x 8 Posts
11' 3" ' sidewalls, Knee wall is 3'
Round rafters
Heavy Pine Sleepers for Floor Joists with Center Beam

The Carey



**The Carey
20 x 30**

20 x 30 Civil War Era Barn



Civil War Era Barn 20 x 30 2 story

A great deal of siding and slate is available

Slates are large: 16" w x 24" long

The Three Bay



The Three Bay

20' x 36' x 21' hi

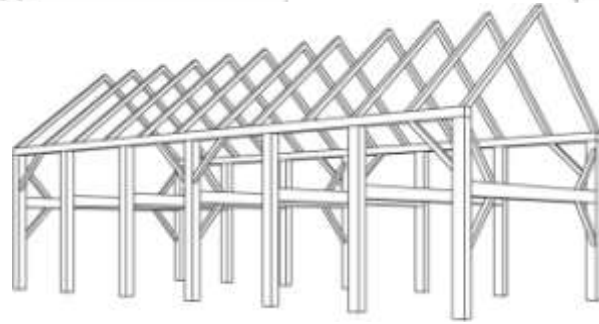
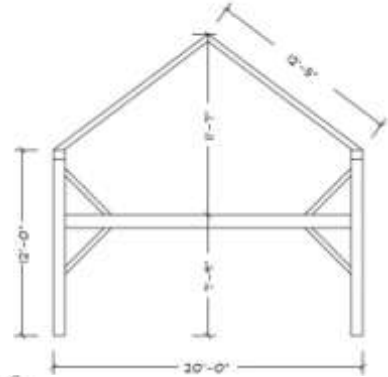
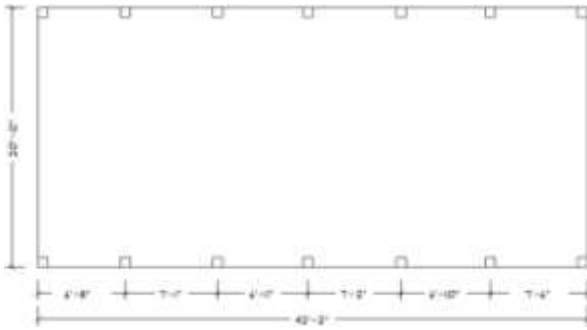
Loft Gable Height 7'

(11' potential garage door openings)

Ryan
20 x 42



BENTS A, D I G



Ryan

20 x 42

1840

Eave Height 12'

Multi Bent Barn would work well for a workshop or side-entry garage with a 600-800 Sq. Ft apartment/living space above

Carriage House



Carriage House

20 x 55

Sawn Frame with a full second floor
Mix of hewn and spruce and hemlock

Gunstock Posts are 8 x 8 to 8 x 11

It is 16' to the top plate, 7 1/2 feet on the first floor, 8' on the second floor

Carriage Shed



Carriage Shed

20 x 70 - 1 1/2 story

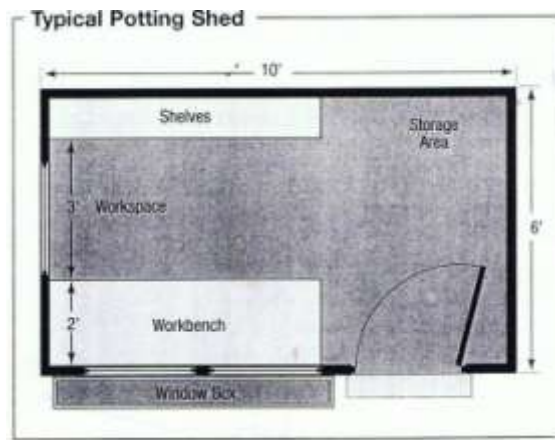
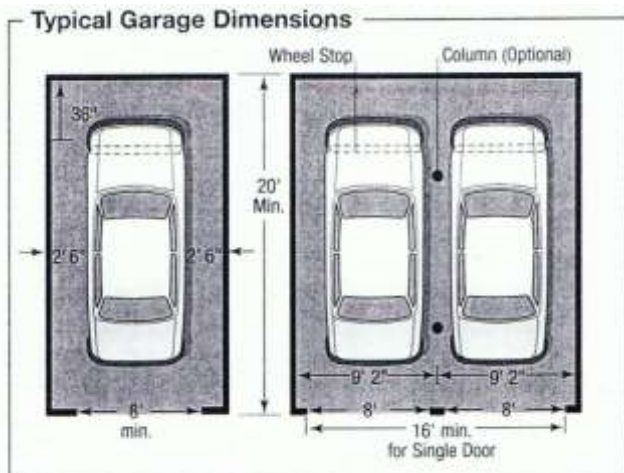
Started as 20 x 30 building and was added to
Original 20 x 30 is Hand Hewn

10- 18" wide floors on the second floor

Stairway to the 2nd floor, 8' 2nd floor height- no collar ties

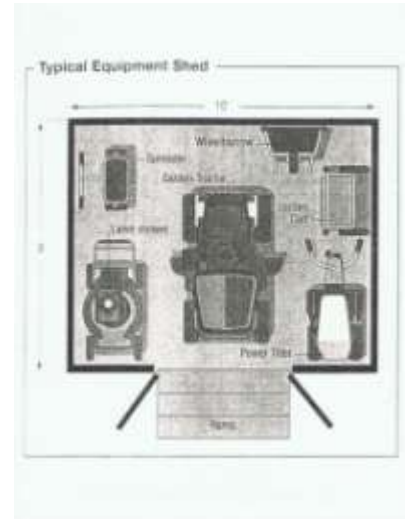
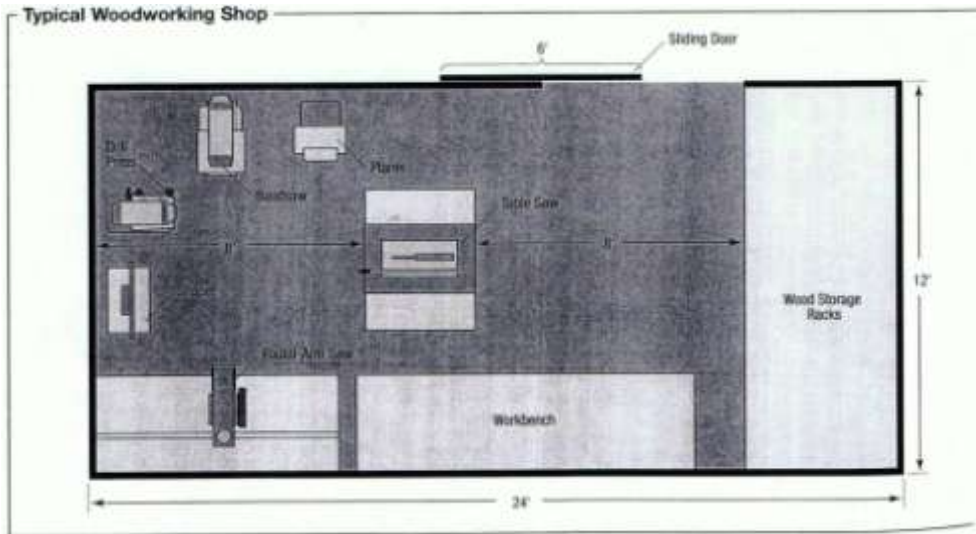


These floor Plans represent minimum dimensions for you to play with as you look at Building Frames. If you want to see these schematics larger, feel free to email me: jonaharvey@comcast.net



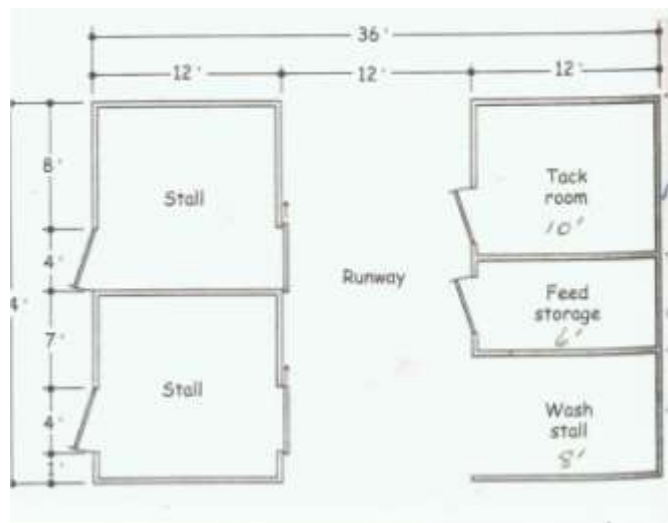
Garage 20' x 24' minimum for 3 Car Garage,
20' x 12' for 2 Car Garage

Potting Shed
10' x 6'



WoodWorking or Hobby Shop 12' x 24'
10'

Equipment Shed 8' x 10'



Two Stall Stable with Tack Room, Wash Stall and Feed Area
24' x 36'

All of these Individual Buildings are "Resurrection-Ready"!



Progress Encroaching on Magnificent Buildings: Welcome the story of Glorious Resurrection!

The buildings you see here are ready to be reconstructed wherever you say. They're all yours! They are here because, yes, they have been threatened by the bulldozer. They have been either physically removed to *temporary safety* by an AGN Network

Professional or are still standing under their watchful eye, “under contract in the field”, in hopes of adoption. They are all temporarily “saved”. None of them are really saved until they are adopted by a citizen-steward or a designer to be reconstructed into a new future, in a new location.

If no one comes forward, many scenarios ensue, Some of these buildings may be “partially saved”; that is; they will be deconstructed for partition, that is, for their parts, which will be used to provide fabulous American Pioneer Texture Décor in *New to Look Old* Home Construction. Many heritage buildings will be destroyed by comprehensive demolition. Some will completely and irrevocably collapse in a dangerous heap from private financial struggle; re-roofing a huge barn for a retired farmer who is no longer using the building is dauntingly expensive. In that case, yes, snapped, craftsman-created heritage hand hewed timbers *do* go to landfill.

The Buildings you see here are “Resurrection Ready”. They get documented, numbered and tagged, meticulously and methodically deconstructed, whisked away to safety, repaired and placed in watchful storage by trained Network Professionals. Some have been freshly rescued. Some are still standing. Some have been lingering in storage for years. Storage tends to cost insistent dollars and is not to be viewed as a perpetual solution. The AGN Network Professionals are footing those bills for us right now.

But we have an idea.

Yes, it’s awful when civilization encroaches and an Antique Heritage Icon is destroyed in order to make room for “progress”. ”Ain’t it Awful?” is a valid tale of woe. Destruction is currently the standing default American Solution to suburban sprawl. Yet, here is a beginning thought to the depository on this issue: Instead of *fighting* this trend of geographically re-shuffling populations, perhaps strengthening the protocol of deconstructing and reconstructing displaced antique buildings in order to save them can become ***accepted common practice***.. We could easily slot the Reconstruction of Antique Buildings gracefully and effortlessly into corresponding New Old House “Best Practices” in this country.

Progress is a factoid of life for good reasons. Creating Antique Architecture Migrations in positive response to inevitable Population Migrations in a harmonious way is a global trend we can embrace with our nifty new Reconstruction Preservation Protocol! In fact, the United States could Pioneer this Movement worldwide! We’re World Famous for the Pioneering, Melting Pot thing already.

These homeless buildings represent our American Heritage and the Pioneer Struggle of the Rugged Individuals who *literally* “built” this country with the Yankee Know-How they imported from cultures worldwide. It’s not necessary to helplessly stand by saying “Ain’t it Awful?” That’s beneath the Pioneer Spirit! Progress is here to stay and we need to create a pro-active response to it. We can honor our venerable homesteading pioneers with a pioneer homesteading protocol: a Resurrection Explosion. (Reconstruction has been happening since Medieval times. It “ain’t that hard”....)

We can Reshuffle and Relocate these magnificent buildings as an ordinary part of our “New to Look Old” Best Practices to meet the population shifts of modern and future times!

Yes or Yes, America?

For further conceptual reaches on this issue, and some ideas about why it’s *not* common practice, consult our News Page and share your ideas! We need ‘em!



A Reconstructed Antique Building!

The New Old House!

**All the advantages of New and all the Charm of the Genuine Antique!
This is your chance to bring the building into good order for the future!**

You are the Steward of this sacred moment!

If you are reconstructing an antique building, you are in the wondrous position of having all the advantages of a brand new home and all the privileges, charm and mystic of an antique building! You lucky duck!

While the antique building is theoretically “open to suggestion” before its reconstruction period, you are in the enviable position of being able to design all and any of the energy saving luxuries and modern living necessities currently in invention into its future. Your due diligence at this point will help to ensure that the building will be beloved well into the future! Thanks!



Click our Catalog Icon:

Back to the Future, Forward to the Future

Primitive Whole House Lighting Ambiance

Wire for it now!

What else would you like to arrange for this building's future?



Architectural Global Network

The National "Go To Source"

Jona Harvey

www.GoToAGN.com

610-565-4594 – Office, Yes, we're national!

610-247-1253 - Cell

888-807-1842 - Toll Free

FindIt@GoToAGN.com

AGN is going Global

