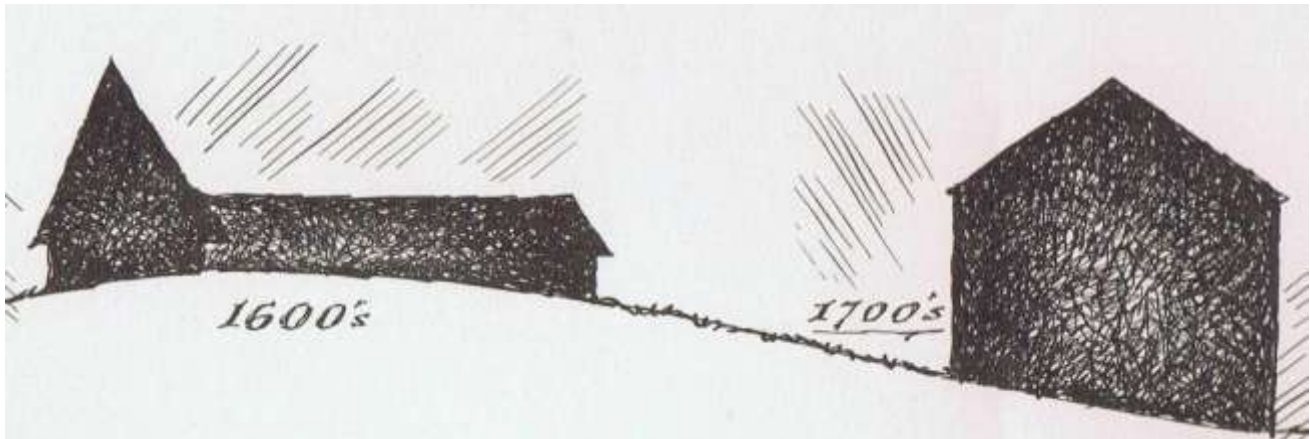


Antique Barns for Deconstruction 30'+ Wide



~~~~~  
**All of the Individual Buildings you will see below are “Resurrection-Ready”!**



## Progress Encroaching on Magnificent Buildings: Welcome the story of Glorious Resurrection!

The buildings you see here are ready to be reconstructed wherever you say. They’re all yours! They are here because, yes, they have been threatened by the bulldozer. They have been either physically removed to *temporary safety* by an AGN Network Professional or are still standing under their watchful eye, “under contract in the field”, in hopes of adoption. They are all *temporarily* “saved”. None of them are *really* saved until they are adopted by a citizen-steward or a designer to be reconstructed into a new future, in a new location.

The Buildings you see here are “Resurrection Ready”. They get documented, numbered and tagged, meticulously and methodically deconstructed, whisked away to safety, repaired and placed in watchful storage by trained Network Professionals. Some have been freshly rescued. Some are still standing. Some have been lingering in storage for years. Storage tends to cost insistent dollars and is not to be viewed as a perpetual solution. The AGN Network Professionals are footing those bills for us right now.

But we have an idea.....(continued at the bottom of the page)

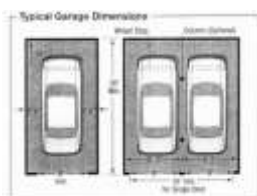
Let’s look at buildings now.



### Barn Conversion Dimensions

**Floor Plans that represent sample minimum dimensions for you to play with as you look at Building Frames**

Scroll down to the bottom of the page to see larger versions for more interior details.



**Garage**  
20' x 24'



**Workshop**  
12' x 24'



**Two Stall Stable +**  
24' x 36'



**Potting Shed**  
10' X 6'



**Equipment Shed**  
8' x 10'



|                    |             |
|--------------------|-------------|
| Railroad Car Barn  | 30 x ?      |
| The Walnut Gambrel | 30 x 40     |
| 30 x 40 Primitive  | 30x 40      |
| Delanson           | 30 x 40     |
| Plymouth           | 30 x 40     |
| The Babcock        | 30 x 40     |
| Auriesville        | 30 x 40     |
| The Toronto        | 30 x 40     |
| Cobleskill         | 30 x 40     |
| The Brookwood      | 30 x 40     |
| Threshing Barn     | 30 x 42' 6" |
| Steele Barn        | 30 x 42' 6" |
| Berwick Mountain   | 30 x 44     |
| 1700s NY English   | 30 x 44     |
| 1799 NY English    | 30 x 40     |
| Jan DeLong         | 30 x 50     |
| The Middleburgh    | 30 x 56' 3" |
| Late 1700s English | 30 x 60     |
| The Wiota          | 30 x 60     |



## 1 The Railroad Car Barn Special Edition: The Illinois Central



**The foundation of this barn is resting on the two Railroad Cars you see on either side of the barn  
This lettering on the side of the BoxCar can be seen from inside the building  
Perhaps there was a severe shortage of stone on this farm or Railroading was more of a passion than a hobby.**



Interesting juxtaposition of architectural rhythms



**1 The Railroad Car Barn**



**2 The Walnut Gambrel**



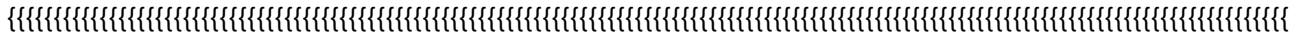


## 2 The Walnut Gambrel

30 x 40

3 bents

complete loft coverage with 2 x 8 walnut joists.



## 3 The 30 x 40 Primitive

30 x 40



Round Purlins



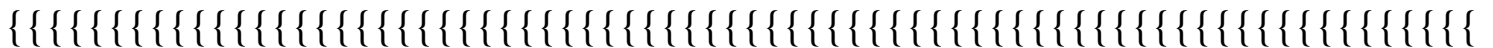
diamond wind brace & hewing detail



one 30' HH tie beam/original roof sheathing

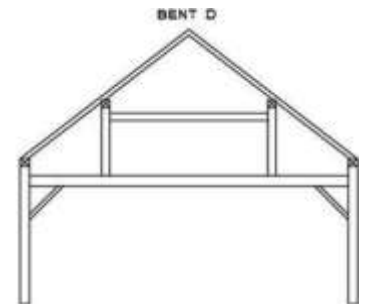
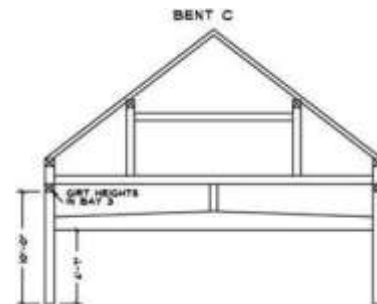
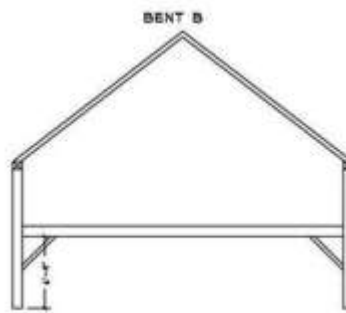
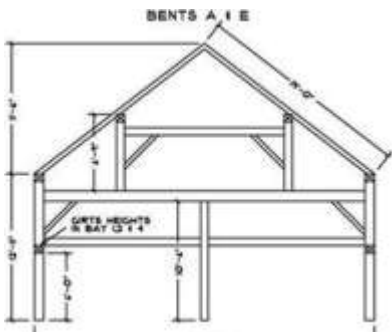
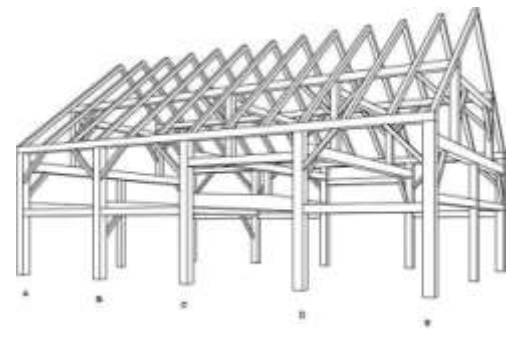
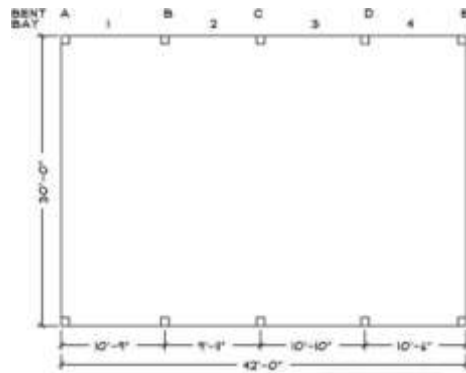
## 3 The 30 x 40 Primitive

30 x 40



## 4 Delanson

30 x 40



**4 Delanson  
30 x 40**

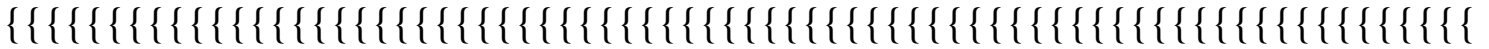
Early Barn: 1780  
Steep Pitched Roof  
All Hand Hewn Timbers, Rafters and Wind Braces  
Swing Beam: 10" x 18" x 30'



**5 The Plymouth**  
**30 x 40**

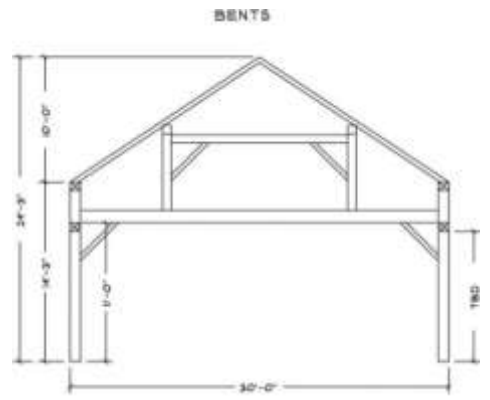
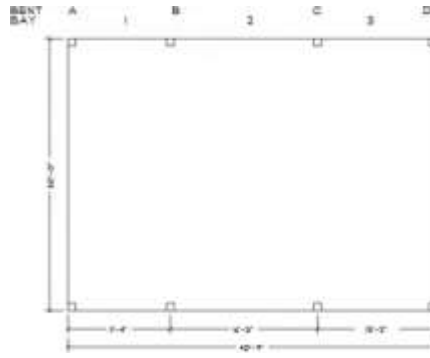


**5 The Plymouth**  
**30 x 40 x 16' sidewalls**  
**Timbers Hand Hewn White Oak 8" x 8" with doweling**



**6 The Babcock**  
**30 x 40**





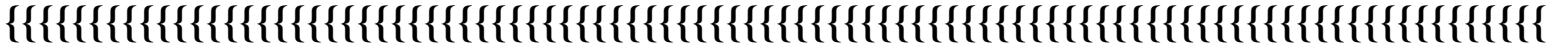
**6 The Babcock**

**30 x 40**

1820

Hand Hewn Timbers mostly Hemlock and Eastern White Pine

Hand Hewn Rafters

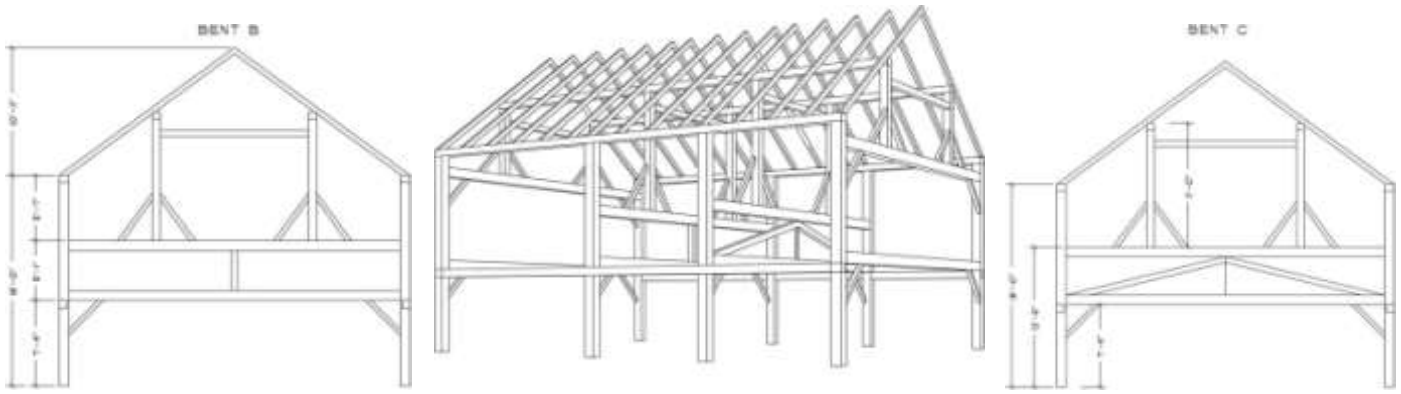


**7 Auriesville**

**30 x 40**



**Unusually Tall: Could finish out with two full height levels or a large open loft**

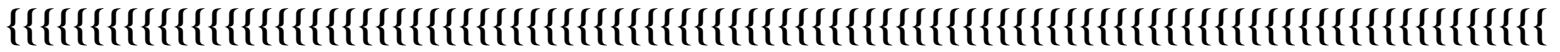


**7 Auriesville**

**30 x 40**

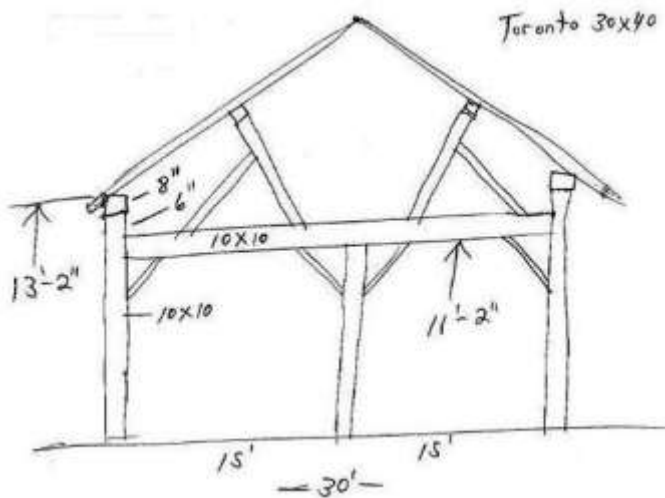
1880s

Unusually Tall: Could finish out with two full height levels or a large open loft



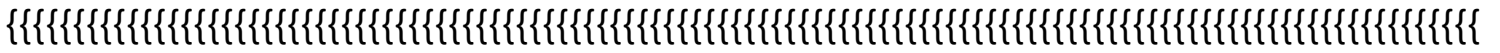
**8 The Toronto**

**30 x 40**



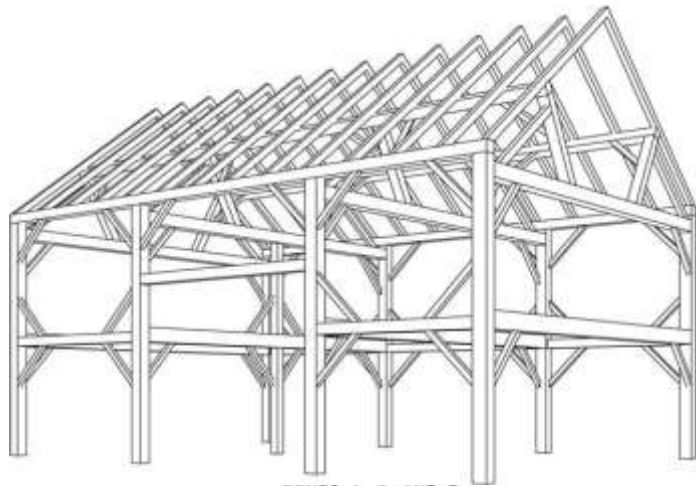


**8 The Toronto**  
**30 x 40**  
**10 x 10 Hewn Softwoods-Interesting Joints**



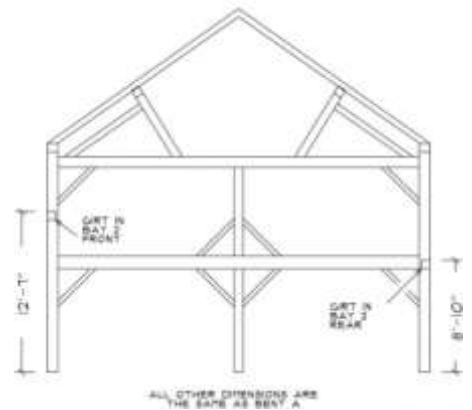
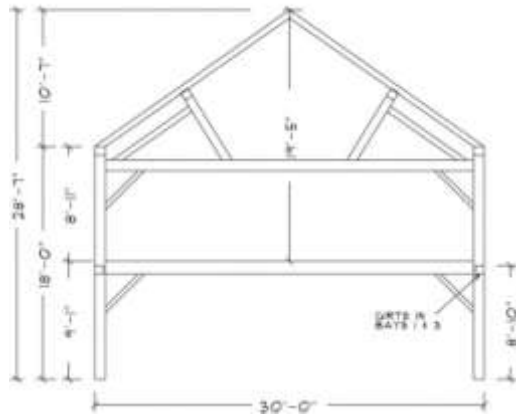
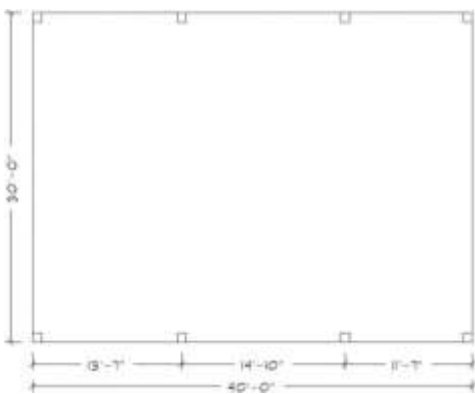
**9 Cobleskill**  
**30 x 40**



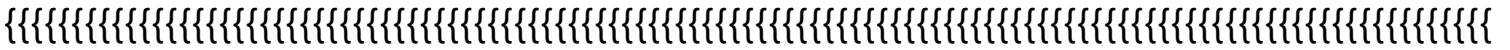


BENTS A, C, AND D

BENT B

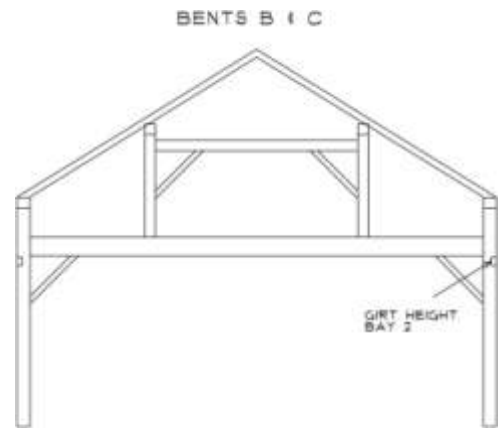
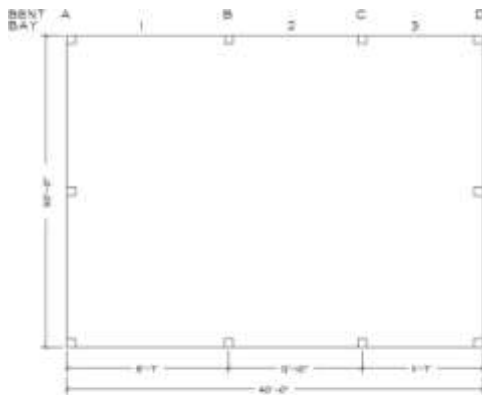
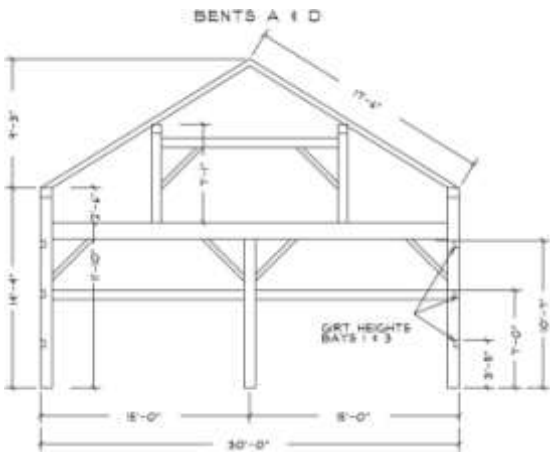
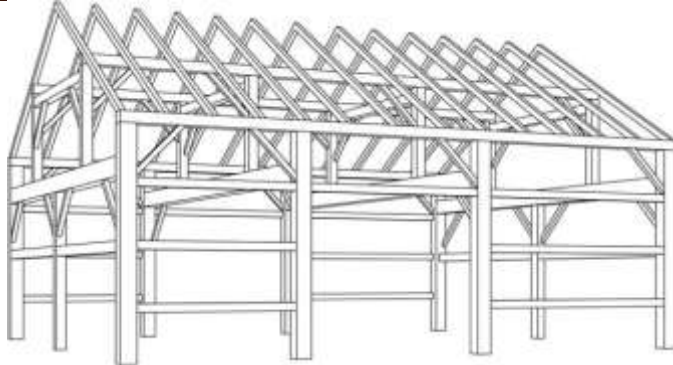


**9 Cobleskill  
30 x 40**



**10 The Brookwood  
30 x 40**





DIMENSIONS ARE THE SAME AS BENT A

**10 The Brookwood**  
**30 x 40**



**11 Threshing Bay Barn**  
 30' x 42'-6"

**This barn has already been moved once. Let's save it again.**



## 11 Threshing Bay Barn

30' x 42'-6"

center bay entry hay bank barn  
 hewn hemlock, basswood, and beech  
 built in ladder

There are lots of extra timbers from both addition and basement

Height from floor to peak is 26'.

Four bents, three bays barn has round rafters; hewn on top side for sheathing boards

rafter plates are 8" x 9" x 42'-6"

tie beams are 10" x 12" x 30'.

Height from to tie beam is about 11' and another 2' to top of rafter plates.

Barn was moved 45 miles from original site to make room for I-90 in mid-40s New rafters were made then



**12 The Steele Barn**  
30 x 42'-6"



**Rear- Cross Gable**



**Gigantic Swing Beam**



**Front**



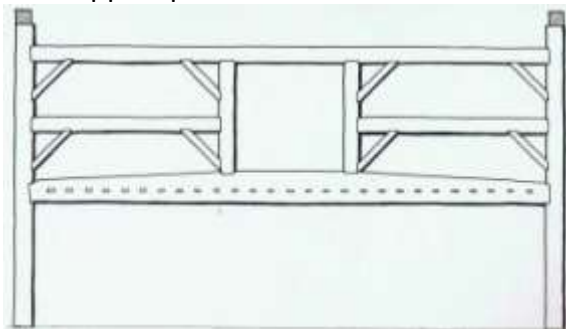
**The Swing Beam creates this loft and an open space without posts below**



**12 The Steele Barn**  
**30 x 42'-6"**

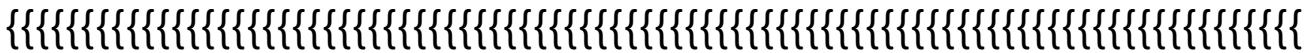
Hand hewn Pine frame with impressive posts

The Bull Beam (Swing Beam) is 12 x 12, growing to 15-17" at center, extending the full 30' expanse, leaving an open first floor area unencumbered with support posts and a beautiful loft overlooking the main gathering area.



A Swing Beam or Bull Beam

Of German design, the swing beam enabled a team of horses to "swing", to be turned around into their stalls without obstruction and provided additional support for an extra hayloft above.



# 13 Berwick Mountain

30' x 44'



# 13 Berwick Mountain

30' x 44'

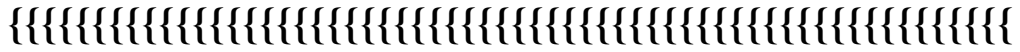
The client's great grandfather owned the property and the client is going to be retiring this summer and he would like to offer the barn for reconstruction for sentimental reasons.

The barn was:

Built by a Scotsman  
Circa 1840  
30' x 44'  
4 bent barn  
13 sets of rafters  
Large beam stock 9"x9"  
Connector beams are 6"x6"  
Braces are 4"x 5"  
Studs 32" apart

Tall barn, 3 levels (loft, main, basement)

Part of the barn skin was shingles, the other portion is board and batten



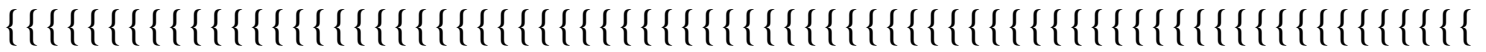
## 14-1790s New York English Barn

30 x 44





**14-1790s New York English Barn**  
30 x 44

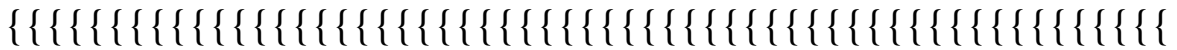


**15-1799 New York English Barn**  
30 x 40



**15-1799 New York English Barn**

30 x 40



**16-Jan DeJong Barn**

30 x 50



**16-Jan DeJong Barn**

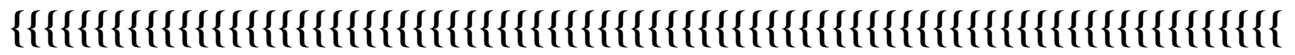
**30 x 50**

1880s

4 Bay

Oak and Other Hardwood Hand Hewn Timbers

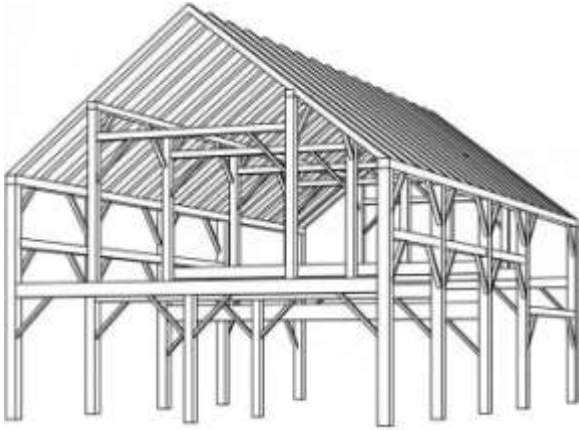
Dismantled



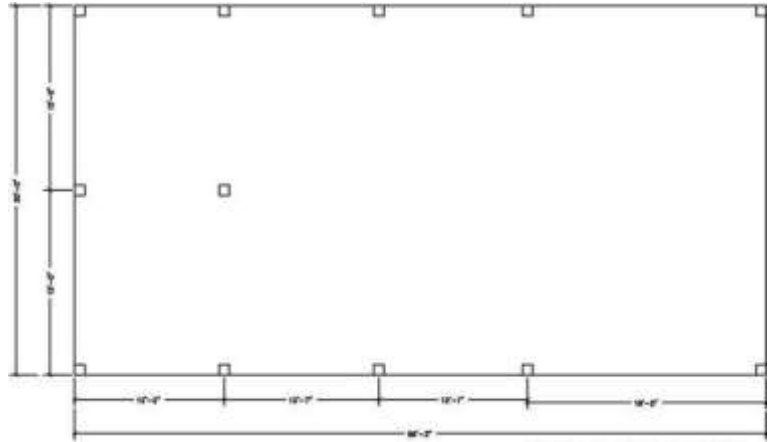
**17-The Middleburgh**

**30 x 56' 3"**



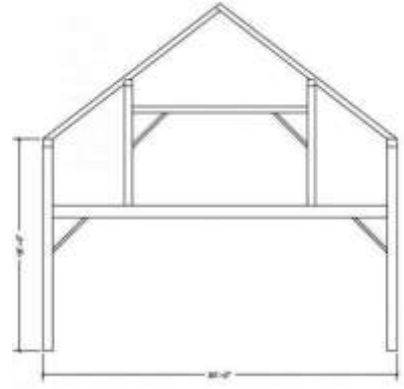
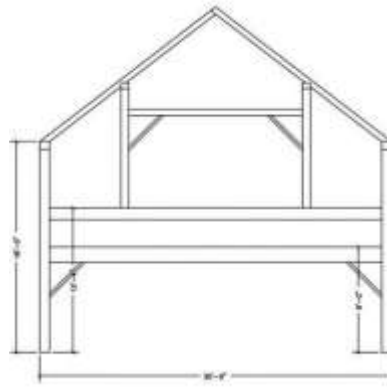
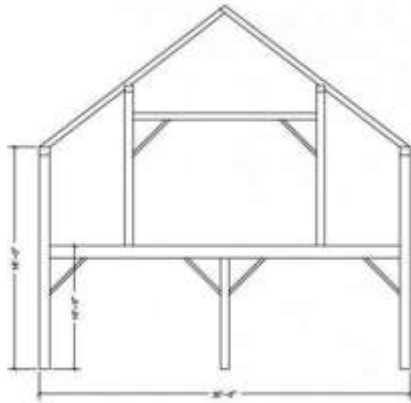


BENTS A, AND B



BENT C

BENTS D, AND E



**17-The Middleburgh**

**1820**

**30 x 56' 3"**



**18-Late 1700s English Barn**

**30 x 60**



### **18-Late 1700s English Barn**

Primarily Eastern White Pine with some Hemlock posts

The timbers are large in size

It is a hewn frame approximately 30'x60'. We believe the original barn to be 30'x40 with the remaining 20' feet added soon after the original. This barn would make a great house conversion. It could easily be scaled back to the original 30'x40' size. However, the additional 20' would make a wonderful master suite in the loft with room below for more bedrooms, utilities etc. This allows for most of the barn to remain open

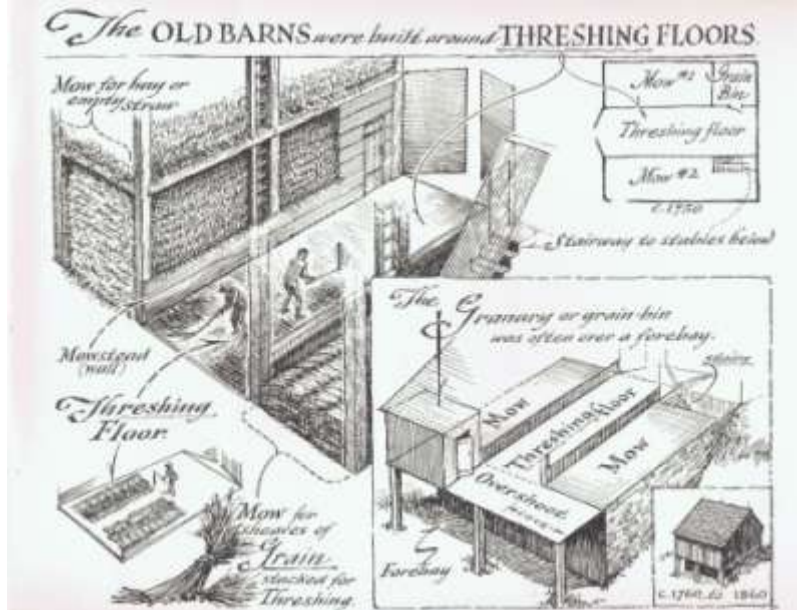
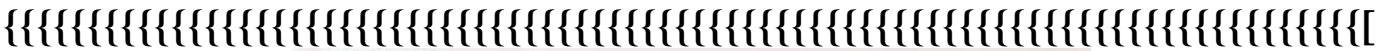


### **19-The Wiota**

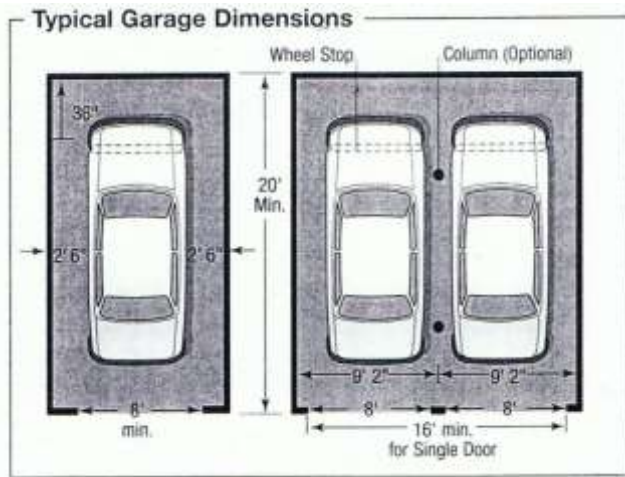
**30' x 60'**



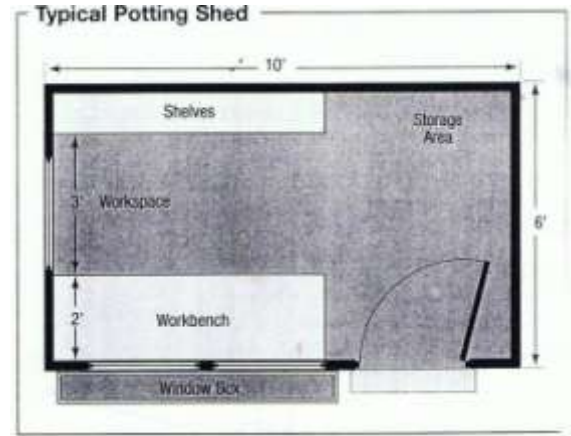
**19-The Wiota**  
**30' x 60' x 16' sidewalls**  
**5 Bents, Center Posts**  
**Peak Height 26'**  
**Timbers Hand Hewn Pine 8" x 8"**



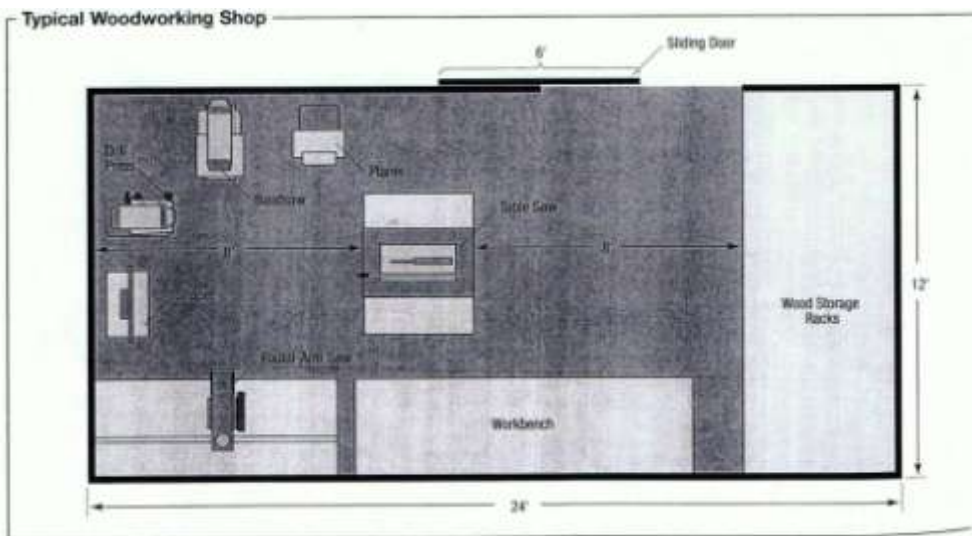
Floor Plans that represent minimum dimensions for you to play with as you look at Building Frames.  
 If you want to see these schematics larger, feel free to email me: [jonaharvey@comcast.net](mailto:jonaharvey@comcast.net)



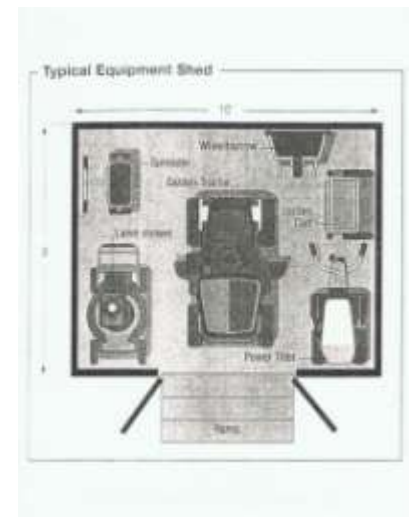
**Garage 20' x 24' minimum for 3 Car Garage,  
 20' x 12' for 2 Car Garage**



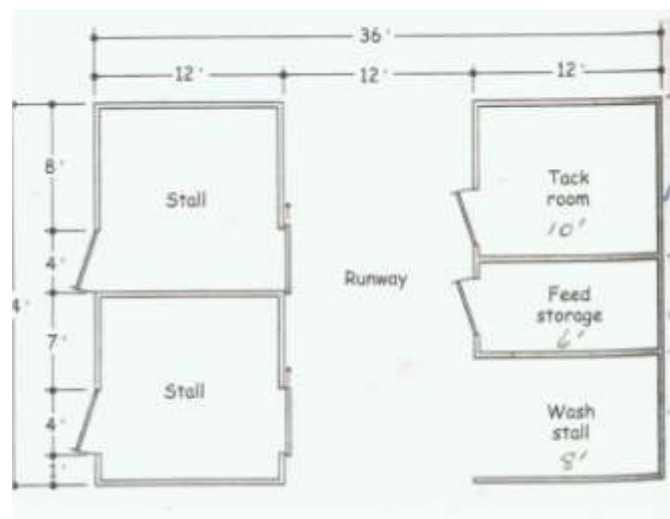
**Potting Shed  
 10' x 6'**



**WoodWorking or Hobby Shop 12' x 24'**



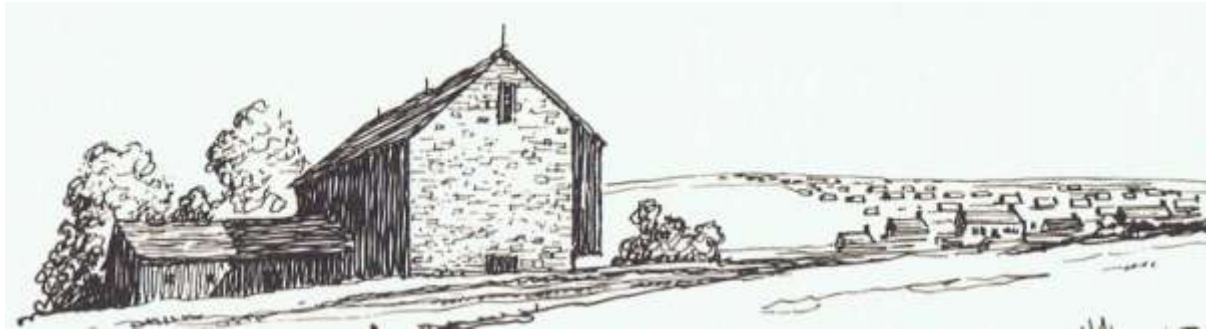
**Equipment Shed 8' x 10'**



**Two Stall Stable with Tack Room, Wash Stall and Feed Area  
 24' x 36'**



## All of these Individual Buildings are “Resurrection-Ready”!



### Progress Encroaching on Magnificent Buildings: Welcome the story of Glorious Resurrection!

The buildings you see here are ready to be reconstructed wherever you say. They’re all yours! They are here because, yes, they have been threatened by the bulldozer. They have been either physically removed to *temporary safety* by an AGN Network Professional or are still standing under their watchful eye, “under contract in the field”, in hopes of adoption. They are all *temporarily* “saved”. None of them are *really* saved until they are adopted by a citizen-steward or a designer to be reconstructed into a new future, in a new location.

If no one comes forward, many scenarios ensue, Some of these buildings may be “partially saved”; that is; they will be deconstructed for partition, that is, for their parts, which will be used to provide fabulous American Pioneer Texture Décor in *New to Look Old* Home Construction. Many heritage buildings will be destroyed by comprehensive demolition. Some will completely and irrevocably collapse in a dangerous heap from private financial struggle; re-roofing a huge barn for a retired farmer who is no longer using the building is dauntingly expensive. In that case, yes, snapped, craftsman-created heritage hand hewed timbers *do* go to landfill.

The Buildings you see here are “Resurrection Ready”. They get documented, numbered and tagged, meticulously and methodically deconstructed, whisked away to safety, repaired and placed in watchful storage by trained Network Professionals. Some have been freshly rescued. Some are still standing. Some have been lingering in storage for years. Storage tends to cost insistent dollars and is not to be viewed as a perpetual solution. The AGN Network Professionals are footing those bills for us right now.

But we have an idea.

Yes, it’s awful when civilization encroaches and an Antique Heritage Icon is destroyed in order to make room for “progress”. “Ain’t it Awful?” is a valid tale of woe. Destruction is currently the standing default American Solution to suburban sprawl. Yet, here is a beginning thought to the depository on this issue: Instead of *fighting* this trend of geographically re-shuffling populations, perhaps strengthening the protocol of deconstructing and reconstructing displaced antique buildings in order to save them can become accepted common practice.. We could easily slot the Reconstruction of Antique Buildings gracefully and effortlessly into corresponding New Old House “Best Practices” in this country.

Progress is a factoid of life for good reasons. Creating Antique Architecture Migrations in positive response to inevitable Population Migrations in a harmonious way is a global trend we can embrace with our nifty new Reconstruction Preservation Protocol! In fact, the United States could Pioneer this Movement worldwide! We’re World Famous for the Pioneering, Melting Pot thing already.

These homeless buildings represent our American Heritage and the Pioneer Struggle of the Rugged Individuals who *literally* “built” this country with the Yankee Know-How they imported from cultures worldwide. It’s not necessary to helplessly stand by saying “Ain’t it Awful?” That’s beneath the Pioneer Spirit! Progress is here to stay and we need to create a pro-active response to it. We can honor our venerable homesteading pioneers with a pioneer homesteading protocol: a Resurrection Explosion. (Reconstruction has been happening since Medieval times. It “ain’t that hard”....)

We can Reshuffle and Relocate these magnificent buildings as an ordinary part of our “New to Look Old” Best Practices to meet the population shifts of modern and future times!

Yes or Yes, America?

For further conceptual reaches on this issue, and some ideas about why it’s *not* common practice, consult our News Page and share your ideas! We need ‘em!



## A Reconstructed Antique Building!

## The New Old House!

**All the advantages of New and all the Charm of the Genuine Antique!  
This is your chance to bring the building into good order for the future!  
You are the Steward of this sacred moment!**

If you are reconstructing an antique building, you are in the wondrous position of having all the advantages of a brand new home and all the privileges, charm and mystic of an antique building! You lucky duck!

While the antique building is theoretically “open to suggestion” before its reconstruction period, you are in the enviable position of being able to design all and any of the energy saving luxuries and modern living necessities currently in invention into its future. Your due diligence at this point will help to ensure that the building will be beloved well into the future! Thanks!



Click our Catalog Icon:

**Back to the Future, Forward to the Future  
Primitive Whole House Lighting Ambiance**

Wire for it now!

What else would you like to arrange for this buildings' future?



## Architectural Global Network

The National “Go To Source”

Jona Harvey

[www.GoToAGN.com](http://www.GoToAGN.com)

610-565-4594 – Office, Yes, we're national!

610-247-1253 - Cell

888-807-1842 - Toll Free

[FindIt@GoToAGN.com](mailto:FindIt@GoToAGN.com)

AGN is going Global

