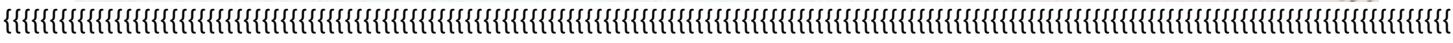
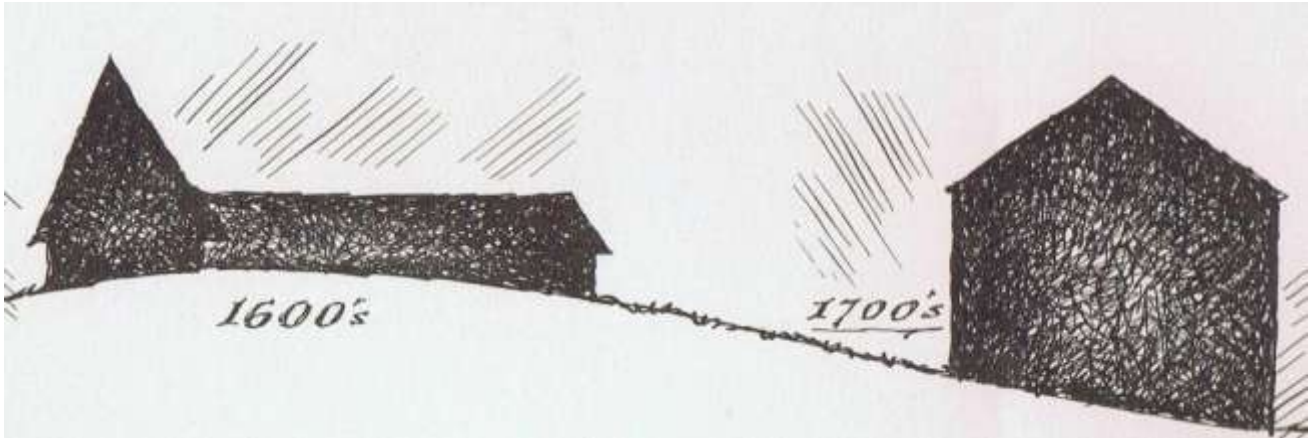


# Antique Barns for Reconstruction 36' - 38' Wide



**All of the Individual Buildings you will see below are “Resurrection-Ready”!**



## Progress Encroaching on Magnificent Buildings: Welcome the story of Glorious Resurrection!

The buildings you see here are ready to be reconstructed wherever you say. They're all yours! They are here because, yes, they have been threatened by the bulldozer. They have been either physically removed to *temporary safety* by an AGN Network Professional or are still standing under their watchful eye, “under contract in the field”, in hopes of adoption. They are all *temporarily* “saved”. None of them are *really* saved until they are adopted by a citizen-steward or a designer to be reconstructed into a new future, in a new location.

The Buildings you see here are “Resurrection Ready”. They get documented, numbered and tagged, meticulously and methodically deconstructed, whisked away to safety, repaired and placed in watchful storage by trained Network Professionals. Some have been freshly rescued. Some are still standing. Some have been lingering in storage for years. Storage tends to cost insistent dollars and is not to be viewed as a perpetual solution. The AGN Network Professionals are footing those bills for us right now.

But we have an idea.....(continued at the bottom of the page)

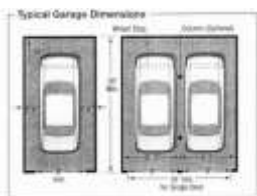
Let's look at buildings now.



### Barn Conversion Dimensions

**Floor Plans that represent sample minimum dimensions for you to play with as you look at Building Frames**

Scroll down to the bottom of the page to see larger versions for more interior details.



**Garage**  
20' x 24'



**Workshop**  
12' x 24'



**Two Stall Stable +**  
24' x 36'



**Potting Shed**  
10' X 6'



**Equipment Shed**  
8' x 10'

The Cornish	36 x 36 or 36 x 52
C. 1841 New England	36 x 37
The Babcock	36 x 40
Schenectady	36 x 42
Raised Threshing	36 x 48
The Hay Mow Wheel	36 x 50
The Zephyr	36 x 56
The Drake	36 x 60
Old Baseline	36 x 60
The Gable Wheel	36 x 72
Large Gambrel	36 x 80
Two Rivers	36 x 82
The Granaries	36 x 82
The Long	37 x 45
The Mail Pouch Barn	37 x 57
1870 Ontario	38 x 50
Carpenter	38 x 60
Fir Barn	38 x 65
The Snyder	38 x 68

## 32 The Cornish

36' x 36' or 36' x 52'





### **32 The Cornish**

**36' x 36' or 36 x 52**

**1840**

Four bents, three bays

Gable entry

Hand-hewn frame (36' x 36" section)

Two bents were added to make the barn 36'x52'. The frame could easily be converted back to a four bent barn or continue as a six bent barn. The newer bents are sawn and were probably added around 1880. The original barn dates back to 1840.



### **33 Circa 1841 New England Barn**

**36' x 37'**





**33 Circa 1841 New England Barn**

**36' x 37'**

Five bent, three bay

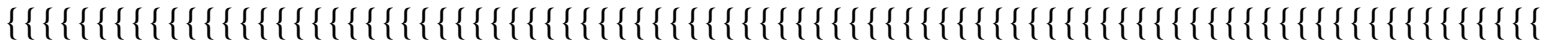
Gable entry

Hand-hewn timber

12' bays and bents on approximate 9' 4" centers

Very well braced barn with long corner braces

The framing members are Pine, Spruce and Hemlock



**34 The Babcock Barn**

**36' x 40'**



### 34 The Babcock Barn

36' x 40'

English Gambrel, 1890

36' x 40'

3 Bay, 29' 9" tall

Sawn Beams: 85% white oak, 15% ash

Bay #1: 9'0"

Bay #2: 13' 4"

Bay #3: 15' 0"

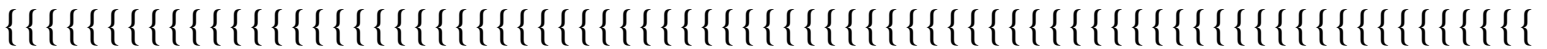
Schematic barn to house architectural drawings for the barn  
fully mature New York State approved architectural drawings

The ground floor could be used as either a garage or 6 horse stalls.

Includes the original clapboard siding, roof timbers, pegs

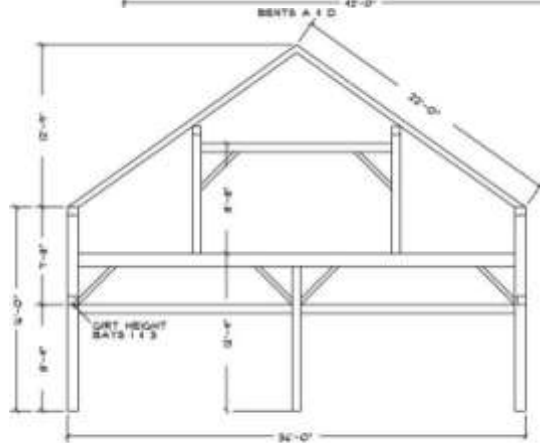
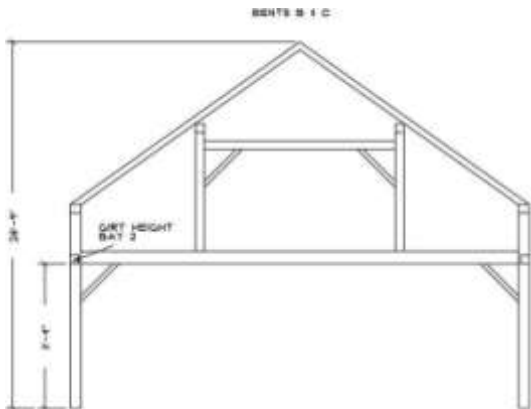
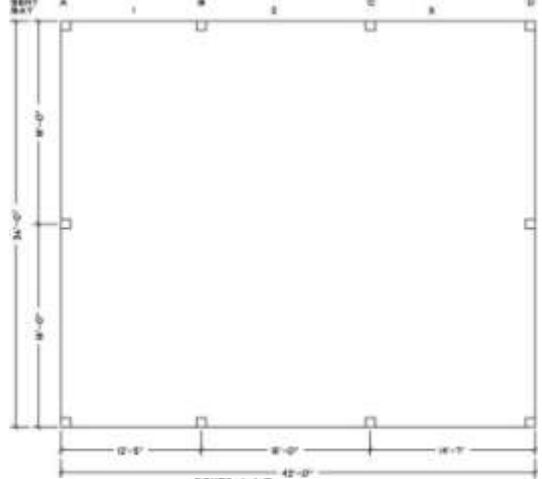
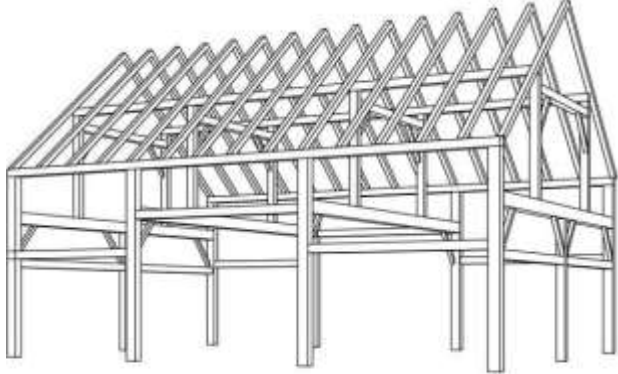
Extra timber for interior décor

Only the flooring was not salvageable.



### 35 Schenectady

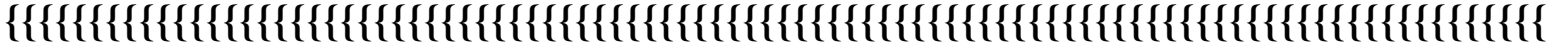
36 x 42



35 Schenectady

**36 x 42**

1820



**36 Raised Threshing Hay Barn**

36' x 48'



**36 Raised Threshing Hay Barn**

36' x 48'

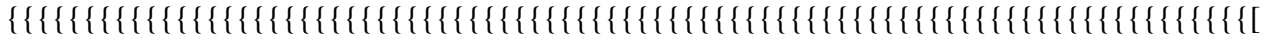
C.1840 raised threshing hay barn  
36' x 48' and height is 29' from floor to peak.  
Four bents, three bays  
center bay entry for threshing hay  
Timbers are mostly of hewn pine & ash

Has nice built in ladder on interior bent

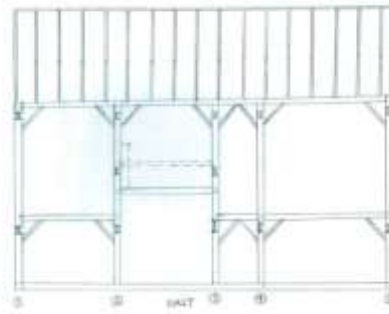
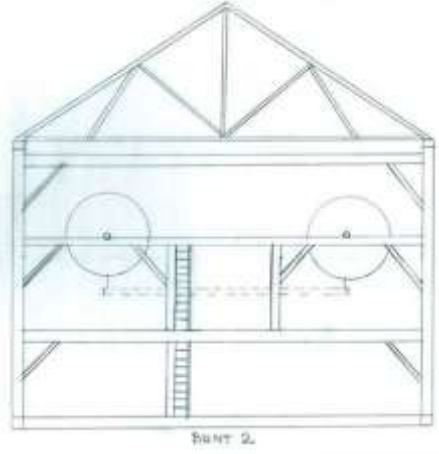
Tie beams are 10' x 10' x 36' and rafter plates are 8" x 9" x 48' long!

Rafters are round and hewn on top side for roof sheathing

Three walls are made with wall purlins and fourth wall is studs only which is different than most other barns.



### 4. The Hay Mow Wheel Barn 36' 4" x 50'



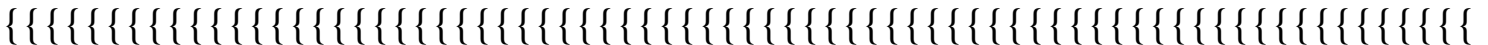
36' 4" x 50' with two, working Hay Mow Wheels on a track

Full Drawings available..

Massive Bull Beam (Swing Beam)

The two Hay Wagon Wheels still work on the track; even the ropes are in perfect condition Large Bull Beam (Swing Beam) is 8' high-allows for free span eliminating the need for posts below said swing beam. Huge timbers and exceptionally clean. This barn is a combination of hewn main members with sawn posts, both are of large proportions and very beautiful.

### Hay Mow Barn



### 37 The Zephyr 36 x 56



**The Zephyr**



**37 The Zephyr**

**36 x 56**

**1876**

20" x 12" Swing Beam Tapering to 15" (Swing Beam explanation on Hand Hewn Beams Catalog Page)

Bays are 24' including 2 posts

12' Door Opening

All Pine Ties are 12" x 12'

Plates are 10" x 11"

Posts are 11 1/2" x 12", 17' tall + plate

Full Length Purlin is 8" x 10"

Queen Posts are Sawn Tamarack

Girts are Sawn 6" x 6"



**38 The Drake**

**36 x 60**



### **38 The Drake**

**36 x 60**

White Pine

89" head room under Swing and Loft Beams

14' Head Room under Upper Tie Beams

12 x 12 Hewn Posts and Tie Beams

60' Long 10" x 11" Plates

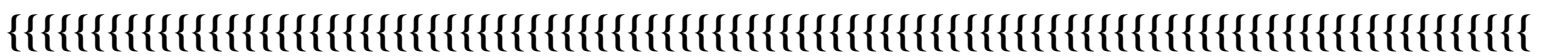
8 x 8 Hewn Purlins

Sawn Girts 4 x 6 and 6 x 8

Sawn Rafters 3 x 5, 3' centers

Sawn 4 x 4 Bracing with 4 x 6 Braces

144" from top of tie beams to the peak



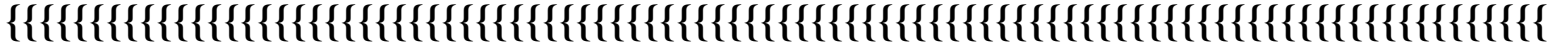
### **39 Old Baseline Barn**

**36 x 60**



**39 Old Baseline Barn**  
**36 x 60**  
Hand Hewn

21" Pine Swing Beam tapering to 16" at the ends (Click on Hand Hewn Beams on Catalog Page for Swing Beam talk)  
 84" headroom under the swing beam  
 The Posts on the same Bent as the Swing Beam are 12" x 14"  
 18' Post  
 12 x 12 Hemlock Posts  
 One Piece Purlins 8" high x 9"  
 Ties are 10 x 10 Bass and Hemlock  
 Girts are Basswood



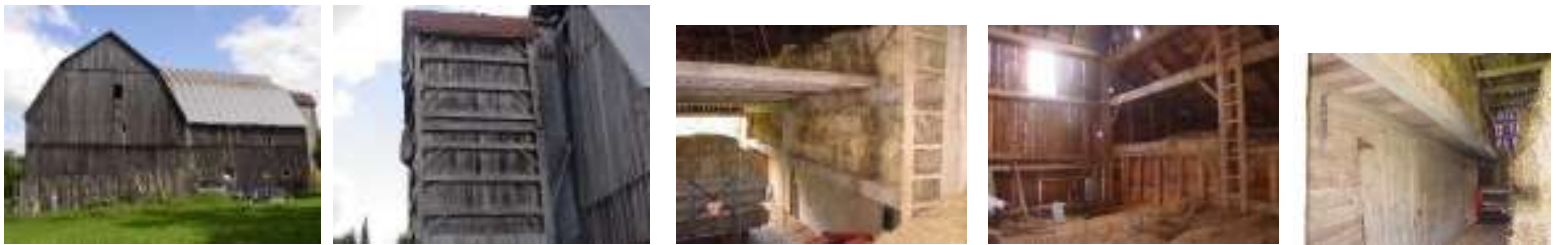
**16. The Gable Wheel**



**The Gable Wheel**  
 36 x 72 with 6' overhang  
 Hand Hewn Oak 8 x 10 posts  
 Unique Gable Ends (the Wheel near the roof line)  
 Wall Height 14' 6"



**15 Large Gambrel Barn/Square Silo**



**15 Large Gambrel Barn**  
**Square Post & Beam Silo Available**  
 c. 1880  
 Hand Hewn 12" Pine Timbers  
 36' x 80' Main Barn  
 36' x 36' Addition

Originally used as a hay barn, both the main barn and the addition are crafted from hand hewn pine timbers. In the Main Barn there is a large bull beam supporting the second floor. Addition is included. There is also a Square Post & Beam Silo available

**40 Two Rivers**  
**36 x 82**



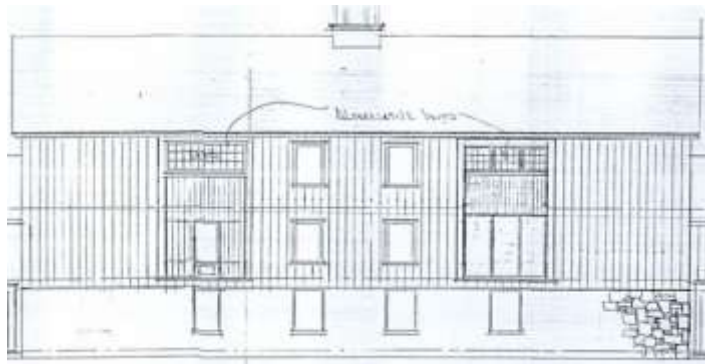
**40 Two Rivers**  
**36 x 82 x 15' sidewalls**  
 Peak Height 26'  
 Originally it was 50' long; there is a seamless addition of 32'2"  
 Timbers are Hand Hewn Pine 8" x 8"s  
 6 bents with center posts  
 Circa 1880



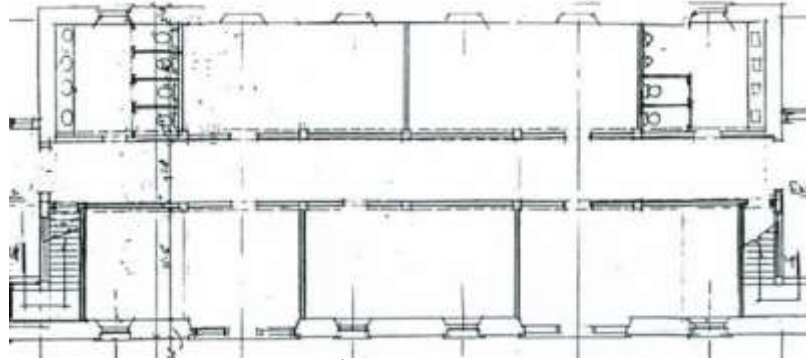
**19 The "Granaries" 36' x 82'**  
**Unusual Center Hall Design flanked by "Granary Rooms"**



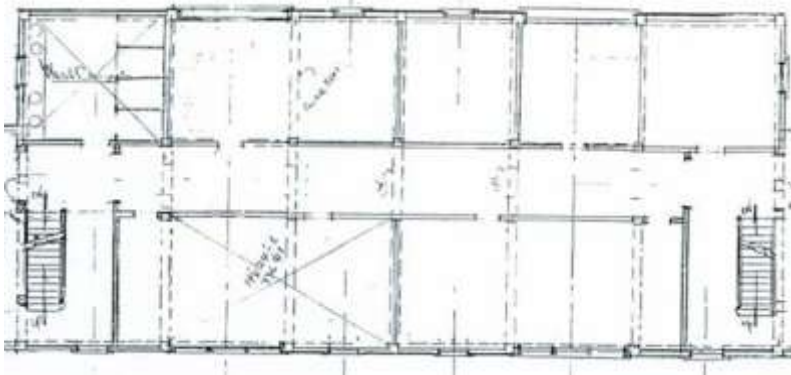
The "Granaries" building on offer is the 36' x 82' center section of this green rendering only.



unique “center aisle” conformation on all three floors



1<sup>st</sup> Floor



2<sup>nd</sup> Floor

Center Aisle on All Floors with “Granary “Rooms” all along both corridors. There were 6 bays for the grain 3 on either side of the central aisle. The Granary Boards are 1 ¼” thick. This barn lends itself well to the addition of barns on either end of the central corridor The Green Colored rendering projects how this central 36 x 82 barn would look if it were flanked by two additional barns, one on either side, for large open space, storage spaces or more rooms. Large posts and a Swing Beam. The Swing Beam is 24” at the center by 12” thick. Comes with tons of original material i.e. soffits, fascias, flooring, rafters, wide pine granary boards, etc .Fantastic for Commercial Use:

Corporate Offices: Ad Agency, Film Art Direction Company, Graphic Design Company, Art Studios...

Retail: Upscale shops, Antiques Stalls, Craft Showrooms, Art Gallery....

Community: Art School, Progressive School, Convention Center “break-out” rooms....



Posts



Posts



Swing Beam



Joinery



**Granary Walls**

The 26' x 82' building in center flanked by two barns This is an architectural artist's rendering which shows a projection of how this totally unique barn *could* expand when flanked with two additional antique barns.



19 The "Granaries" building on offer is the 36' x 82' center section of this green rendering only.  
A barn which might form the perfect bookends for The Granaries



**41 The Long**  
37 x 45

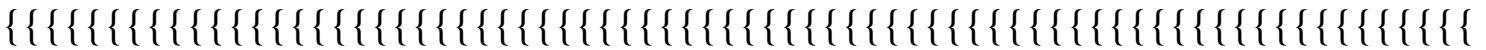




Square Indoor silo

**41 The Long**

37 x 45 x 16' side walls



**2. The Mail Pouch Barn**



**2. The Mail Pouch Barn**

37 x 57 x 15' at Eave





**42- 1870 Ontario Gambrel Barn/The Murphy Barn**

38' x 50'

a mixture of hewn timbers such as ash, pine, oak, and hemlock

Braces are made of sawn oak. rafters are round softwood most likely of pine.

Several nice scarf joints found on rafter plates

4 Bents, 3 Bays (Bays are 14', 16', 20')

Posts are 10" x 10" as well the 38' tie beams

Height from first floor to peak in close to 38'

Some floor joists in basement are 38' long



**43- Carpenter**

**38 x 60**



**43 - Carpenter**

**38 x 60**

1880

Sawn Timber Hay Barn

Very Tall: could have 2 full height levels or a large open loft



**44- The Fir Barn**

38' x 65'



**44- The Fir Barn**

38' x 65'

17' 6" high to the top plate (to the square)

10" sawn fir posts

4 Bays, roughly 1' between bent posts



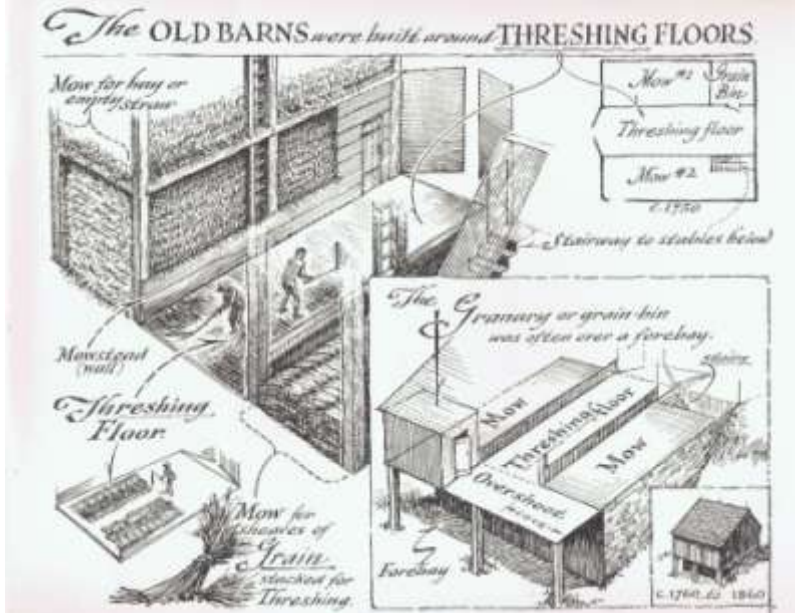
**45-The Snyder**

**38 x 68**



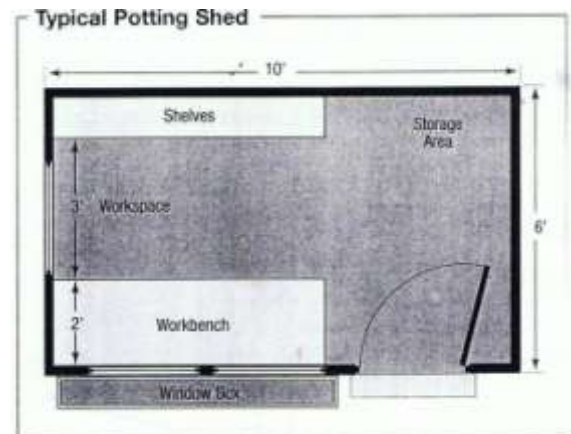
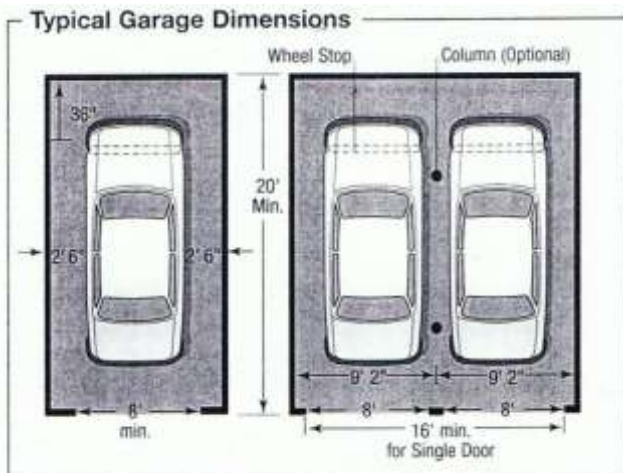


**45 The Snyder  
38 x 68**



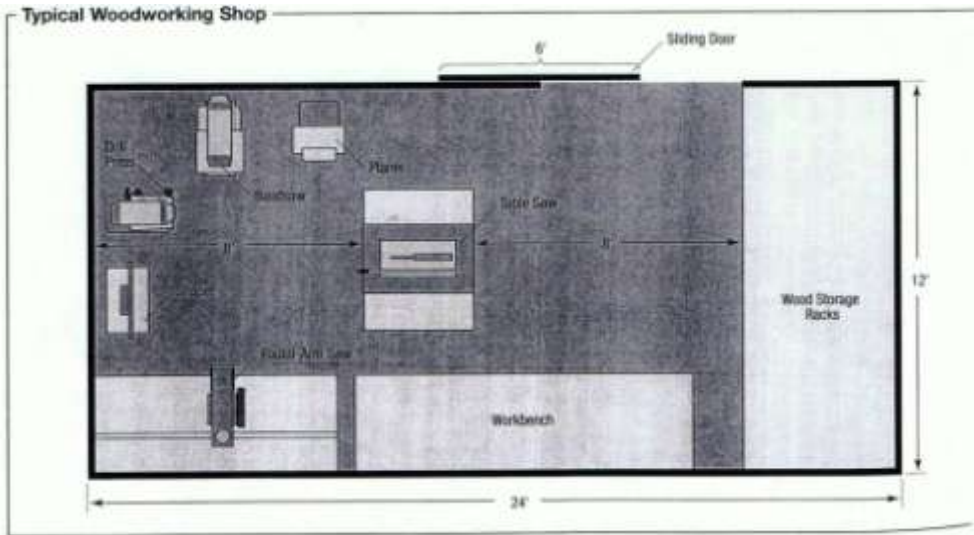
Floor Plans that represent minimum dimensions for you to play with as you look at Building Frames.

If you want to see these schematics larger, feel free to email me: [jonaharvey@comcast.net](mailto:jonaharvey@comcast.net)

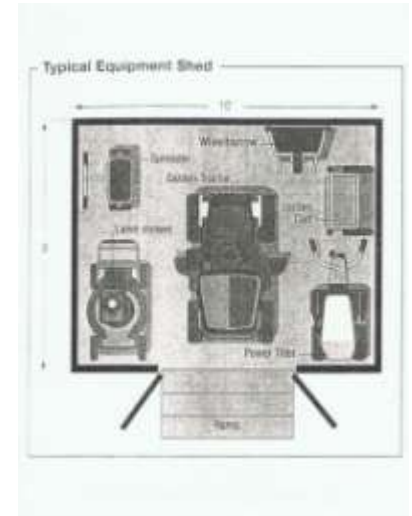


Garage 20' x 24' minimum for 3 Car Garage,  
20' x 12' for 2 Car Garage

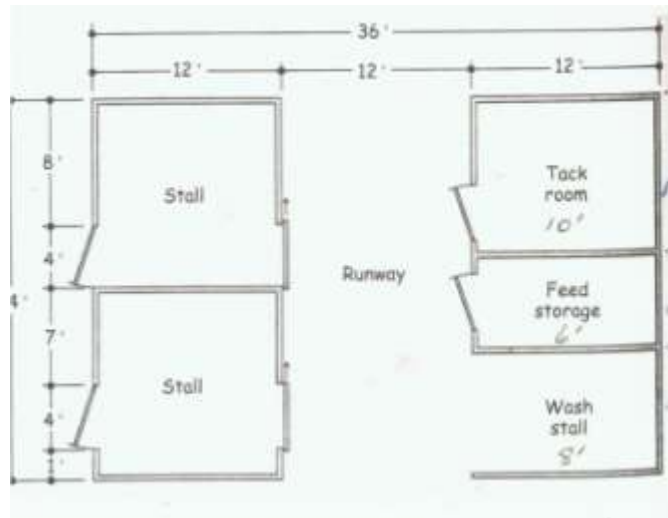
Potting Shed  
10' x 6'



WoodWorking or Hobby Shop 12' x 24'



Equipment Shed 8' x 10'



Two Stall Stable with Tack Room, Wash Stall and Feed Area  
24' x 36'

~~~~~  
**All of these Individual Buildings are "Resurrection-Ready"!**



**Progress Encroaching on Magnificent Buildings: Welcome the story of Glorious Resurrection!**

The buildings you see here are ready to be reconstructed wherever you say. They're all yours! They are here because, yes, they have been threatened by the bulldozer. They have been either physically removed to *temporary safety* by an AGN

Network Professional or are still standing under their watchful eye, “under contract in the field”, in hopes of adoption. They are all *temporarily* “saved”. None of them are *really* saved until they are adopted by a citizen-steward or a designer to be reconstructed into a new future, in a new location.

If no one comes forward, many scenarios ensue, Some of these buildings may be “partially saved”; that is; they will be deconstructed for partition, that is, for their parts, which will be used to provide fabulous American Pioneer Texture Décor in *New to Look Old* Home Construction. Many heritage buildings will be destroyed by comprehensive demolition. Some will completely and irrevocably collapse in a dangerous heap from private financial struggle; re-roofing a huge barn for a retired farmer who is no longer using the building is dauntingly expensive. In that case, yes, snapped, craftsman-created heritage hand hewed timbers *do* go to landfill.

The Buildings you see here are “Resurrection Ready”. They get documented, numbered and tagged, meticulously and methodically deconstructed, whisked away to safety, repaired and placed in watchful storage by trained Network Professionals. Some have been freshly rescued. Some are still standing. Some have been lingering in storage for years. Storage tends to cost insistent dollars and is not to be viewed as a perpetual solution. The AGN Network Professionals are footing those bills for us right now.

But we have an idea.

Yes, it’s awful when civilization encroaches and an Antique Heritage Icon is destroyed in order to make room for “progress”. “Ain’t it Awful?” is a valid tale of woe. Destruction is currently the standing default American Solution to suburban sprawl. Yet, here is a beginning thought to the depository on this issue: Instead of *fighting* this trend of geographically re-shuffling populations, perhaps strengthening the protocol of deconstructing and reconstructing displaced antique buildings in order to save them can become accepted common practice.. We could easily slot the Reconstruction of Antique Buildings gracefully and effortlessly into corresponding New Old House “Best Practices” in this country.

Progress is a factoid of life for good reasons. Creating Antique Architecture Migrations in positive response to inevitable Population Migrations in a harmonious way is a global trend we can embrace with our nifty new Reconstruction Preservation Protocol! In fact, the United States could Pioneer this Movement worldwide! We’re World Famous for the Pioneering, Melting Pot thing already.

These homeless buildings represent our American Heritage and the Pioneer Struggle of the Rugged Individuals who *literally* “built” this country with the Yankee Know-How they imported from cultures worldwide. It’s not necessary to helplessly stand by saying “Ain’t it Awful?” That’s beneath the Pioneer Spirit! Progress is here to stay and we need to create a pro-active response to it. We can honor our venerable homesteading pioneers with a pioneer homesteading protocol: a Resurrection Explosion. (Reconstruction has been happening since Medieval times. It “ain’t that hard”....)

We can Reshuffle and Relocate these magnificent buildings as an ordinary part of our “New to Look Old” Best Practices to meet the population shifts of modern and future times!

Yes or Yes, America?

For further conceptual reaches on this issue, and some ideas about why it’s *not* common practice, consult our News Page and share your ideas! We need ‘em!



## **A Reconstructed Antique Building!**

### **The New Old House!**

**All the advantages of New and all the Charm of the Genuine Antique!**

**This is your chance to bring the building into good order for the future!**

**You are the Steward of this sacred moment!**

If you are reconstructing an antique building, you are in the wondrous position of having all the advantages of a brand new home and all the privileges, charm and mystic of an antique building! You lucky duck!

While the antique building is theoretically “open to suggestion” before its reconstruction period, you are in the enviable position of being able to design all and any of the energy saving luxuries and modern living necessities currently in invention into its future. Your due diligence at this point will help to ensure that the building will be beloved well into the future! Thanks!



**Click our Catalog Icon:**

**Back to the Future, Forward to the Future**

# Primitive Whole House Lighting Ambiance

Wire for it now!

What else would you like to arrange for this buildings' future?



## Architectural Global Network

The National "Go To Source"

Jona Harvey

[www.GoToAGN.com](http://www.GoToAGN.com)

610-565-4594 – Office, Yes, we're national!

610-247-1253 - Cell

888-807-1842 - Toll Free

[FindIt@GoToAGN.com](mailto:FindIt@GoToAGN.com)

AGN is going Global

