

The Barclay- Grobb House

Two Highly Complete Antique Buildings Which Can Be Joined Together to create **One** Beautiful, Unique Dwelling

An ingenious design combining two exceptionally fine buildings into one fabulous house that has it all
The 1819 Wilderness Georgian Grobb House + the 1830 Barclay Barn = The Barclay Grobb House



The 1819 Wilderness Georgian Grobb House
Refined Eloquence of Chair Rail
Hand Planed Beaded Board



The 1830 Barclay Barn
Sturdy Heft of Hand Hewn Beams
Granary Boards

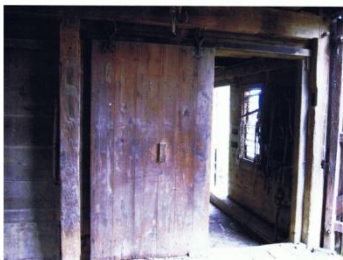
These two Original Antique Buildings join together logistically and aesthetically. They are both 28' wide. Their conformations, proportions and rooflines blend as though they were made to be together.

The Grobb House is Wattle and Daub, with hand planed beaded board throughout and has chair rail in every room. It would look great as a Brick and Timber Factwerk. The Barclay Barn has huge beams, huge plank doors and granary boards everywhere. These original buildings come with the authentic hand planed wall boards, doors, hardware, granary boards, wide plank floors and unique special features.

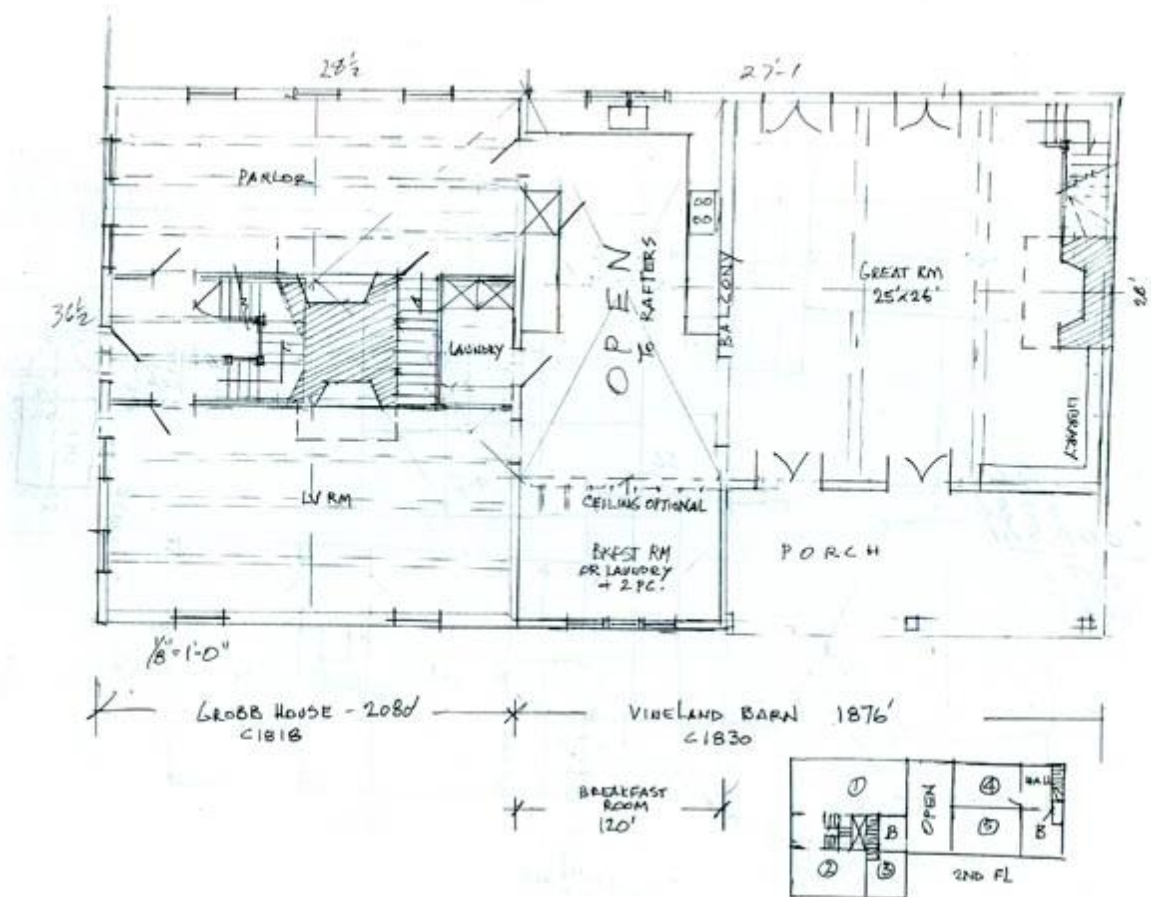
Melding these two "Antique Uniques" is an opportunity to repurpose and retain a large, open Barn space that was intentionally designed in its origins to be expansive... and to cherish the smaller rooms from the Georgian House, which were intentionally designed to be partitioned for the creation of intimate living spaces by *their* original designers. Both types of space dynamics support the emotional needs of the human spirit in this New Old House. Together these heritage buildings make one evocative dwelling

A Sample Floor Plan Dynamic:

The melding of these two buildings will elicit a highly creative design journey as floor plans are discovered. The wide open 28' clear span of the barn (clear span on both floors) could create very primitive, very expansive rooms, which retain the oversize dynamic of the space as the barn designers originally intended. For example, below are some of the fun barn doors from the barn: (Some slide.)



This is a design which makes a 4BR, 3 Bath authentic New Old House of 3950 Sq Ft.

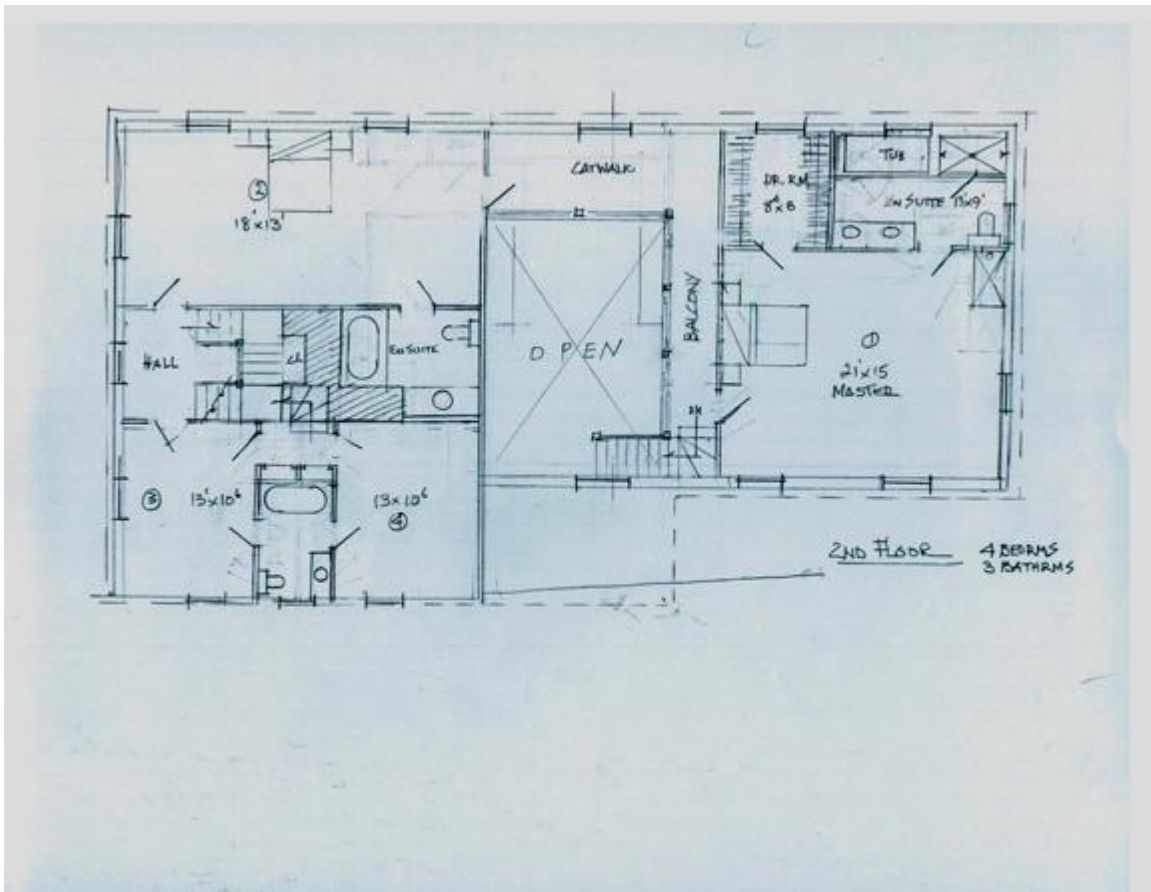


A First Floor Possibility

A Second Floor Possibility



Second Floor Expansiveness (Expansiveness is on the first floor as well)



A 2nd Floor possibility

Both buildings supply a unique, contrasting Rhythm and Dynamic

1819 Grobb House

A Wilderness Georgian
 19th Century Sophistication
 28' 6" x 36' 6"

19th Century Sophistication

1830 Barclay Barn

Exceptional, Unique Barn Craftsmanship
 19th Century Mastery of Husbandry
 28' x 40'

19th Century Heft



Wattle and Daub and Chair Rail



Post and Beam



Delicate Chair Rail in the Grobb House



Large Hand Hewn Beams in the Barclay Barn



1819 Grobb House Frame

+



1830 Barclay Barn Frame

The Height, Width and Roof Pitch of the frames dovetail beautifully

Contrasting Wallboards



Hand Planed Beaded Board in the House



Granary Boards in the Barn

Contrasting "Pegs"



Peg Rail in the House



Axe Handle Pegs for Saddles in the Barn

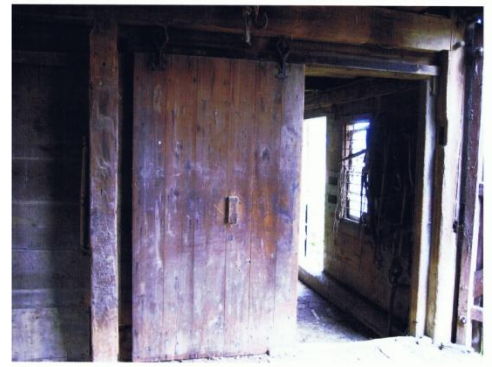
Contrasting Door Styles



The Front Door of the House



+



The Rolling Plank Door in the Barn



These original buildings come with the authentic hand planed wall boards, doors, hardware, granary boards, wide plank floors and unique special features. These buildings were meant to be together. They define and highlight each other; they compliment, contrast, dovetail and blend, bringing out the best of each other. Refinement with majestic, sophisticated shapes contrasted with hefty straight line strength.

The Individual Building Descriptions

The Grobb House

The Grobb House

A Wilderness Georgian

28' 6" x 36' 6"

Completed in 1819 by Swiss/German Mennonite, Alexander Grobb

In faded paint on a basement entrance door is the date 1819 which may be the date the house was finished. Partial sections of wattle and daub was found between the closely-spaced upright posts as one would find in walls built a century or two earlier.

Wide, hand-planed pine planking was used for floors and interior walls. Beautifully chamfered pine joists of an immense size carried the second floor and attic floor. Chair rail in every room informs us of Grobb's eye for fine finished detail. The beaded wallboards, papered over the years, can be restored to their original painted colors. There is early spring-latch hardware for the interior doors. A dentilled cornice graces the underside of the roof as does a signature by the builder tucked in at the top of a gable.

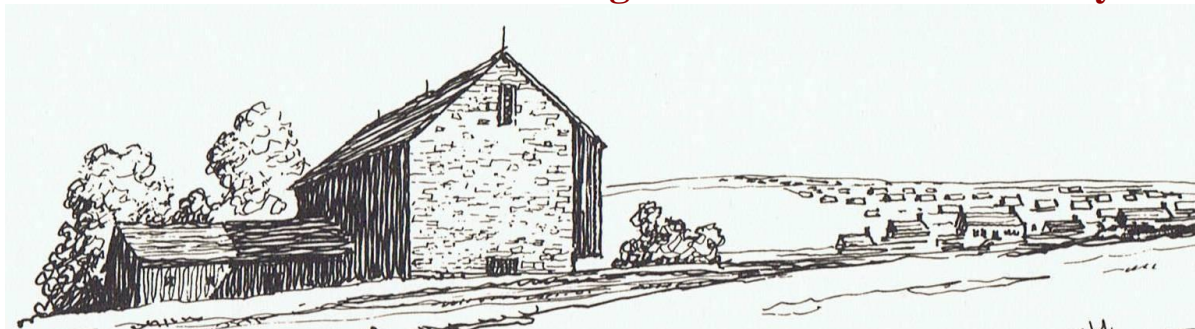
The Barclay Barn

28' x 40'

The Barclay barn c1830 is an exceptional example of post and beam joinery as seen in its high, cross-braced knee wall of 7 ft. and clear span ceiling joists. Hand-hewn collarless rafters create a wonderful ceiling to the second floor. It is unusual to see this kind of craftsmanship in a barn that measures only 28' x 40'. This building offers a great opportunity for dramatic spaces with true old- world ambiance.



All of these Individual Buildings are “Resurrection-Ready”!



Progress Encroaching on Magnificent Buildings: Welcome the story of Glorious Resurrection!

The buildings you see here are ready to be reconstructed wherever you say. They're all yours! They are here because, yes, they have been threatened by the bulldozer. They have been either physically removed to *temporary safety* by an AGN Network Professional or are still standing under their watchful eye, “under contract in the field”, in hopes of adoption. They are all *temporarily* “saved”. None of them are *really* saved until they are adopted by a citizen-steward or a designer to be reconstructed into a new future, in a new location.

If no one comes forward, many scenarios ensue. Some of these buildings may be “partially saved”; that is; they will be deconstructed for partition, that is, for their parts, which will be used to provide fabulous American Pioneer Texture Décor in *New to Look Old Home Construction*. Many heritage buildings will be destroyed by comprehensive demolition. Some will completely and irrevocably collapse in a dangerous heap from private financial struggle; re-roofing a huge barn for a retired farmer who is no longer using the building is dauntingly expensive. In that case, yes, snapped, craftsman-created heritage hand hewed timbers *do* go to landfill.

The Buildings you see here are “Resurrection Ready”. They get documented, numbered and tagged, meticulously and methodically deconstructed, whisked away to safety, repaired and placed in watchful storage by trained Network Professionals. Some have been freshly rescued. Some are still standing. Some have been lingering in storage for years. Storage tends to cost insistent dollars and is not to be viewed as a perpetual solution. The AGN Network Professionals are footing those bills for us right now.

But we have an idea.

Yes, it's awful when civilization encroaches and an Antique Heritage Icon is destroyed in order to make room for “progress”. “Ain't it Awful?” is a valid tale of woe. Destruction is currently the standing default American Solution to suburban sprawl. Yet, here is a beginning thought to the depository on this issue: Instead of *fighting* this trend of geographically re-shuffling populations, perhaps strengthening the protocol of deconstructing and reconstructing displaced antique buildings in order to save them can become **accepted common practice**. We could easily slot the Reconstruction of Antique Buildings gracefully and effortlessly into corresponding New Old House “Best Practices” in this country.

Progress is a factoid of life for good reasons. Creating Antique Architecture Migrations in positive response to inevitable Population Migrations in a harmonious way is a global trend we can embrace with our nifty new Reconstruction Preservation Protocol! In fact, the United States could Pioneer this Movement worldwide! We're World Famous for the Pioneering, Melting Pot thing already.

These homeless buildings represent our American Heritage and the Pioneer Struggle of the Rugged Individuals who *literally* “built” this country with the Yankee Know-How they imported from cultures worldwide. It's not necessary to helplessly stand by saying “Ain't it Awful?” That's beneath the Pioneer Spirit! Progress is here to stay and we need to create a pro-active response to it. We can honor our venerable homesteading pioneers with a pioneer homesteading protocol: a Resurrection Explosion. (Reconstruction has been happening since Medieval times. It “ain't that hard”....)

We can Reshuffle and Relocate these magnificent buildings as an ordinary part of our “New to Look Old” Best Practices to meet the population shifts of modern and future times!

Yes or Yes, America?

For further conceptual reaches on this issue, and some ideas about why it's *not* common practice, consult our News Page and share your ideas! We need 'em!



**A Reconstructed Antique Building!
The New Old House!**

**All the advantages of New and all the Charm of the Genuine Antique!
This is your chance to bring the building into good order for the future!
You are the Steward of this sacred moment!**

If you are reconstructing an antique building, you are in the wondrous position of having *all the advantages of a brand new home* and *all the privileges, charm and mystic of an antique building!* You lucky duck!

While the antique building is theoretically “open to suggestion” before its reconstruction period, you are in the enviable position of being able to design all and any of the energy saving luxuries and modern living necessities currently in invention into its future. Your due diligence at this point will help to ensure that the building will be beloved well into the future! Thanks!



**Click our Catalog Icon:
Back to the Future, Forward to the Future
Primitive Whole House Lighting Ambiance**

Wire for it now!

As Steward, what else would you like to arrange for this building’s future?



Architectural Global Network

The National “Go To Source”

Jona Harvey

www.GoToAGN.com

610-565-4594 – Office, Yes, we’re national!

610-247-1253 - Cell

888-807-1842 - Toll Free

FindIt@GoToAGN.com

AGN is going Global

