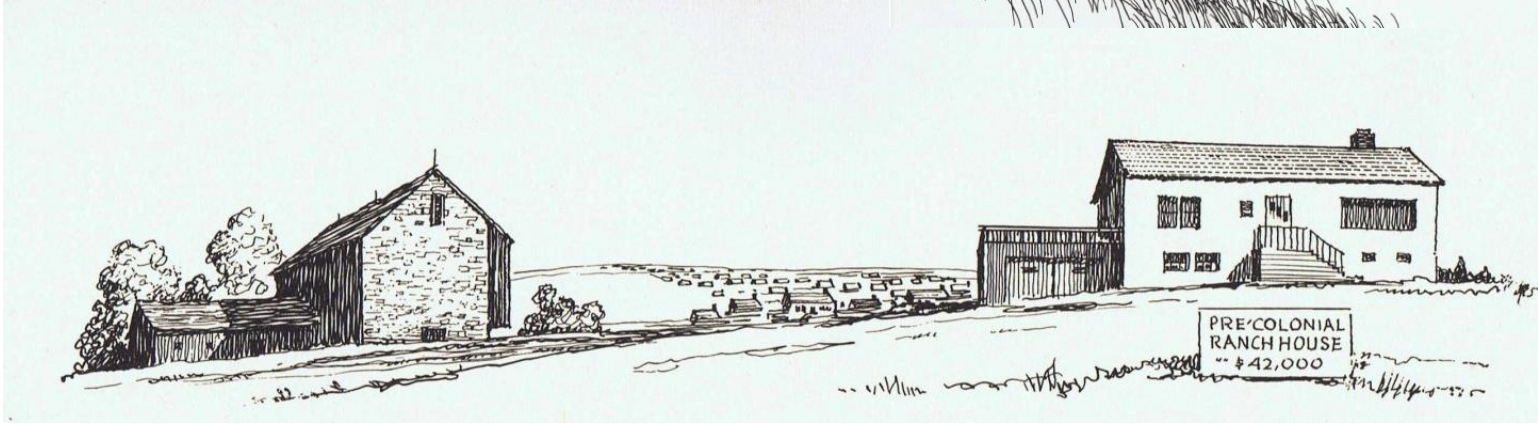
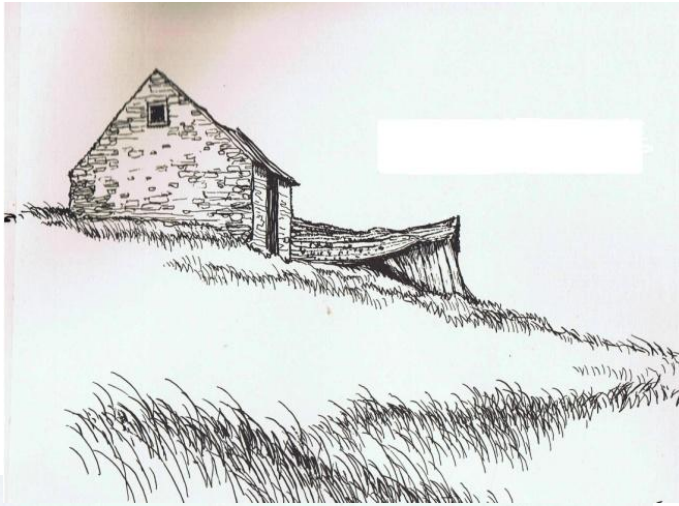


What if my building is endangered by Structural Problems that are too overwhelming to resolve?

Or

What if my building is In the way of "Progress"?



Architectural Global Network is here to help you if you need to deconstruct the building in order to save it from the bulldozer. If the building is a good candidate for Reconstruction, AGN may also be able to find a qualified buyer who wants to design it into their next project.

[To see a picture story of a wildly successful recent deconstruction/reconstruction project, have a look at our Web Page called "What We Do"](#)

But first, is it still possible to save the building right where it is?

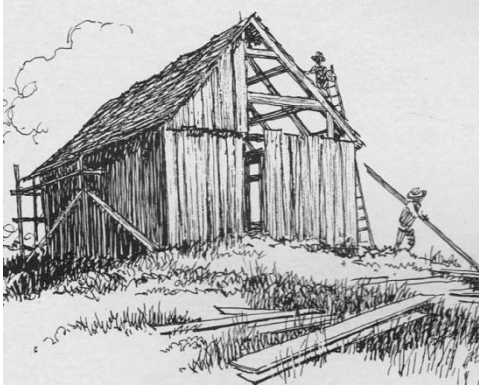
It's always best to try to save the building in place, if you can. If you are trying to sell the building on the land, be sure to speak to a Realtor who specializes in antique buildings. If the building needs repairs that seem steep, try The National Trust for Historic Preservation (202-588-6000) and your state representative and see if there are any federal or state grant programs or tax programs for repairing antique buildings. Lately state programs in particular are appearing with more and more frequency.

If you need to contact experts to look at repairing the building, do give us a call. Our artists can take a look at it for you and make any necessary repairs with skill and care, using authentic antique materials. Maybe we can save it in place a little longer.

If you love the building and *do* have to deconstruct *it in order to save it*, we can help you.

Sometimes it turns out that either because of encroaching progress, life circumstances or the inevitable decline of a building which is in serious need repairs, it is sometimes not possible to keep the building safely in place indefinitely. If that is the case, it's better to salvage everything possible, rather than to let it go to total demolition and the landfill.

If it turns out that you need to deconstruct the building in order to save it, there are two possibilities:



of

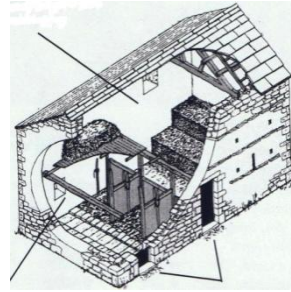
One is to have the entire building *Deconstructed* for the purpose of Reconstructing it.
The second option is to have the building carefully *Disassembled* in order to save the components.

Architectural Global Network will help you to find the professionals you need so that you can get the necessary information to make decisions about the building's future. AGN's first step is to work with you to assemble a presentation of photographs and information about the building. We will then get the portrait of information directly to the appropriate deconstruction artists who can help you evaluate the future possibilities for your building by making a site visit.

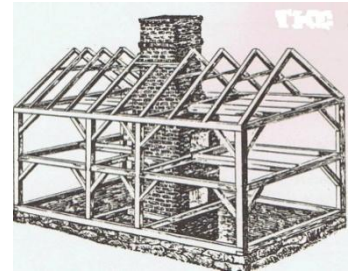
We deconstruct Antique Timber Frame Buildings and Log Buildings



Log Buildings



Barns



Timberframe Houses

Reconstruction

If the building is a good candidate for reconstruction, it can be meticulously documented, numbered and tagged and a possible buyer for reconstruction can be sought. Architectural Global Network will help you and your deconstruction artist to locate a qualified buyer who may just be searching for your building

Salvage Parts

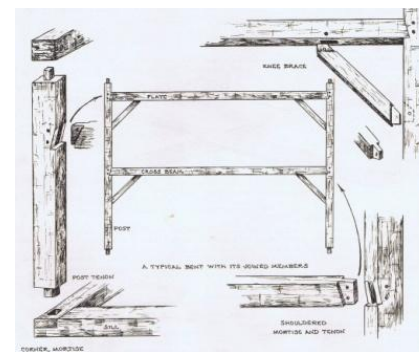
If a buyer is not found, or the building is not in the proper condition for reconstruction but yet is in possession of highly desirable building components, it may be possible to disassemble it *carefully* in order to salvage everything possible. AGN can help to place the components in the marketplace.

Architectural Global Network is here to help get you to the right professionals so that you can make decisions.

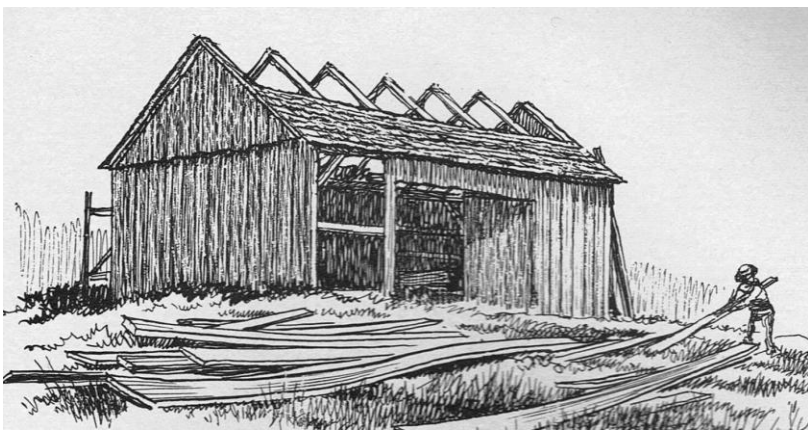
We will work with you to create a presentation of your building and get it "out to the field". There are over 200 professionals all around the country who professionally dismantle antique buildings and routinely cheat the landfills.

For the right building, they will often travel for significant miles.

Our first task is to create a portrait of the building in both pictures and text, so that we can show each professional what you have. Architectural Global Network will contact each of



them with the visual portrait of your building, a portrait that is Clear, Detailed and Honest, with good description and detail.



To find out more about how to get started in creating a presentation of your building, finding the right professional and about the specifics of the deconstruction process and costs, email us at findit@GoToAGN.com



[Many citizens like you care deeply about successfully rescuing antique buildings and their components](#)
Click here to hear their story. Maybe it's your story too.

Architectural Global Network The National "Go To Source"

Jona Harvey

610-565-4594-office

610-247-1253- cell

888-807-1842

www.GoToAGN.com

jonaharvey@comcast.net

findit@GoToAGN.com

[AGN is going Global](#)